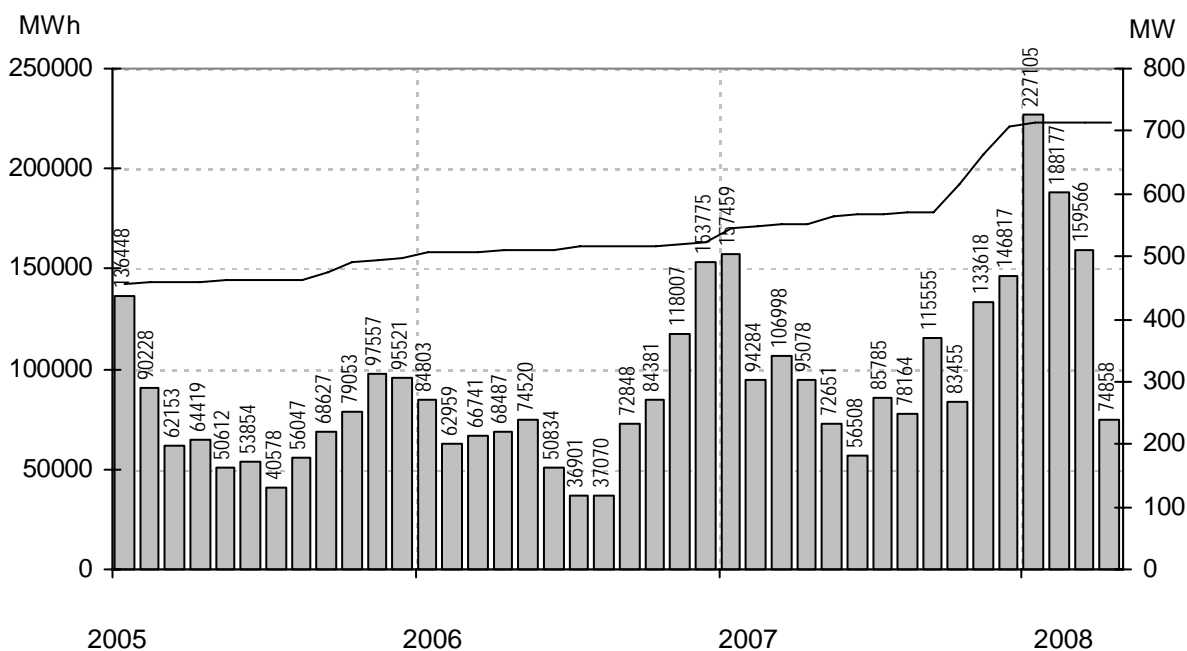


Vindkraftverk

april 2008

Internetadress: <http://www.vindenergi.org/driftuppfolj.htm>

Vindproducerad el



Staplarna visar producerad energi per månad i MWh, linjen visar installerad effekt i MW

Sammanfattning

| | | |
|--------------------------|-------|-----------|
| Installerad effekt | (MW) | 715 |
| Antal verk | (st) | 886 |
| Rapporterade denna månad | (st) | 766 |
| Elproduktion | | |
| 2006 | (MWh) | 911 325 |
| 2007 | (MWh) | 1 226 371 |
| 2008 | (MWh) | 649 705 |
| Rapporterat denna månad | (MWh) | 74 858 |

| Vindens energiinnehåll | |
|---|-------|
| Månaden jämfört med samma månad tidigare år | 82 % |
| Året hittills jämfört med samma period under tidigare år | 130 % |
| Senaste 12 månaderna jämfört med samma period under tidigare år | 112 % |

Förklaringar till tabellen på följande sidor

| | | | |
|-------|---|-----|-----------------------|
| Ber | Av ägaren lämnad uppgift på beräknad elproduktion | | |
| Årtal | Sammanlagd elproduktion under respektive år | | |
| 12mån | Elproduktion och tillgänglighet senaste 12 månaderna | | |
| Månad | Elproduktion under månaden | | |
| Tid | Andel av månaden som generatoren varit inkopplad på nät | | |
| * | Nytt verk | | |
| MS | Mindre störning | PU | Planerat underhåll |
| YNS | Yttre nätstörning | ÖPS | Övrigt planerat stopp |
| ÖYS | Övrig yttre störning | TF | Tekniskt fel |

Ett ELFORSK - Statens Energimyndighetsprojekt

Sammanställningen gjord 2008-05-12

Ansvarig:

Nils-Eric Carlstedt, telefon: 08 - 739 54 67

E-post: nilseric.carlstedt@vattenfall.com

Adress: Vattenfall Power Consultant AB, Vindstatistik

Box 527

162 16 Stockholm

Telefon: 08 - 739 60 00 vx Fax: 08 - 739 62 98

| Ny * | Effekt (kW) | | Nr | Anläggning Benämning, Ort | Placering Karta | D/H (m) | I drift | Ber MWh | 2006 MWh | 2007 MWh | 2008 MWh | 12mån MWh | 12mån % | Månad MWh | Tid % | Hindertid (tim) | | | | |
|------|-------------|-----|-----|------------------------------|--------------------|------------|---------|------------|-------------|-------------|-------------|--------------|------------|--------------|----------|-----------------|-----|-----|----|-----|
| | Hög | Låg | | | | | | | | | | | | | | MS | YNS | OYS | PU | OPS |
| 55 | New Wind | | 14 | Norrvange,Lärbro | J7b | 17/23 | 871210 | | | | | | | | | | | | | |
| 55 | 11 Vestas | | 1 | Tågarp,Tågarp | C5d | 15/23 | 830810 | 96 | 52 | 61 | | 42 | | | | | | | | |
| 55 | 11 Vestas | | 2 | Hebbe,Näs | I5f | 15/23 | 840316 | 110 | | | | | | | | | | | | |
| 95 | 20 Tellus | | 37 | Södra Bäckebo,Ålem | G5c | 19/41 | 920225 | 110 | 51 | 70 | 34 | 70 | 99 | 5 | | | | | | |
| 99 | Vestas | | 4 | Erikstorp,Skaraborg | D8h | 20/25 | 890216 | 165 | 87 | | | | | | | | | | | |
| 99 | Wincon | | 19 | Snösbäck,Falköping | D8b | 20/24 | 901001 | 180 | | | | | | | | | | | | |
| 99 | WindWorld | | 58 | Oaxen,Mörkö | I9g | 21/24 | 901105 | 150 | 78 | 78 | 37 | 89 | 100 | 3 | 28 | | | | | |
| 99 | Vestas | | 21 | Ernas Mölla,Veinge | C4e | 20/24 | 910101 | 50 | 30 | | | | | | | | | | | |
| 100 | Vestas | | 501 | Seglaberga I,Laholm | C4e | 20/24 | 880927 | 205 | 112 | 141 | 84 | 181 | 100 | 8 | | | | | | |
| 100 | Vestas | | 48 | Henån,Henån | B8a | 20/24 | 920625 | 130 | | | | | | | | | | | | |
| 150 | WindWorld | | 15 | Snaigsto,Näs | I5i | 28/31 | 900202 | 455 | 260 | 310 | 157 | 336 | 100 | 17 | 73 | | | | | |
| 150 | WindWorld | | 16 | Tjautet,Näs | I5i | 28/31 | 900203 | 455 | 248 | 270 | | 138 | 100 | | | | | | | |
| 150 | WindWorld | | 23 | Ryftes,Fole | J6g | 28/40 | 900605 | | 237 | 136 | | 16 | 100 | | | | | | | |
| 150 | WindWorld | | 17 | Sladdkvenni,Näs | I5i | 28/31 | 900608 | 438 | 305 | 371 | 169 | 390 | 100 | 18 | 71 | | | | | |
| 150 | WindWorld | | 20 | Elvina,Linköping | F8f | 28/30 | 901013 | 314 | 139 | 218 | 101 | 226 | 100 | 9 | 49 | | | | | |
| 150 | WindWorld | | 529 | Österudd Gunnell,Näs | I5f | 27/31 | 911108 | 515 | 349 | 477 | 0 | 304 | 100 | 0 | 86 | | | | | |
| 150 | WindWorld | | 530 | Österudd Christin,Näs | I5f | 27/31 | 911108 | 515 | 346 | 351 | 224 | 419 | 100 | 21 | 61 | | | | | |
| 150 | WindWorld | | 38 | Hede Gård,Mellerud | C9a | 28/40 | 911207 | 385 | 245 | 316 | 99 | 289 | 100 | | | | | | | |
| 150 | WindWorld | | 44 | Gudingén,Näs | I5i | 27/31 | 920111 | 457 | 326 | 382 | 147 | 388 | 100 | 19 | 59 | | | | | |
| 150 | WindWorld | | 532 | Signalen 1,Näs | I5i | 27/31 | 920112 | 455 | 346 | 408 | | 282 | 100 | | | | | | | |
| 150 | WindWorld | | 531 | Österudd Maja,Näs | I5f | 27/31 | 920125 | 515 | 347 | 448 | 212 | 495 | 100 | 20 | 60 | | | | | |
| 150 | WindWorld | | 533 | Signalen 2,Näs | I5i | 27/31 | 920212 | 455 | 323 | | | | | | | | | | | |
| 150 | WindWorld | | 40 | Kyrkebo,Lundsbrunn | D8g | 27/40 | 920319 | 357 | 200 | | | | | | | | | | | |
| 150 | WindWorld | | 41 | Maria,Botillelund | C2i | 27/41 | 920401 | 400 | | | | | | | | | | | | |
| 150 | WindWorld | | 537 | Gans 2,Näs | I5i | 27/31 | 920605 | 465 | 334 | | | | | | | | | | | |
| 150 | WindWorld | | 536 | Gans 1,Näs | I5i | 27/31 | 920605 | 465 | 334 | | | | | | | | | | | |
| 150 | WindWorld | | 47 | Skottorp,Skottorp | C4b | 27/41 | 920702 | 300 | 155 | | | | | | | | | | | |
| 150 | WindWorld | | 60 | Linviken,Näs | I5i | 27/31 | 920820 | 450 | | 408 | | 280 | | | | | | | | |
| 150 | WindWorld | | 61 | Linviken Alma,Näs | I5i | 27/31 | 920826 | 450 | 344 | 426 | | 259 | | | | | | | | |
| 150 | WindWorld | | 62 | Linviken Eskelund,Näs | I5i | 27/31 | 920826 | 438 | 320 | 426 | | 260 | | | | | | | | |
| 150 | WindWorld | | 55 | Stafva,Barlingbo | J6g | 27/40 | 920903 | 317 | 224 | 279 | 135 | 294 | 99 | 13 | 101 | | | | | |
| 150 | WindWorld | | 539 | Närvind Liven,När | J5h | 27/31 | 921028 | 438 | 339 | 410 | 175 | 425 | 99 | | | | | | | |
| 150 | WindWorld | | 538 | Närvind Johan,När | J5h | 27/31 | 921028 | 438 | 350 | 393 | 163 | 399 | 98 | | | | | | | |
| 150 | WindWorld | | 67 | Tägneby,Hästhölmén | E8b | 27/31 | 930122 | 400 | 323 | 345 | | 220 | 96 | | | | | | | |
| 150 | WindWorld | | 75 | Råborg,Gislöv | C1i | 27/32 | 930422 | 428 | | | | | | | | | | | | |
| 150 | WindWorld | | 89 | Skorteby, Lillebror,Skorteby | F8e | 27/40 | 930515 | 238 | | | | | | | | | | | | |
| 150 | WindWorld | | 73 | Arendala,Lund | C2f | 27/40 | 930522 | 416 | 343 | 158 | | | | | | | | | | |
| 150 | WindWorld | | 85 | Widregrens Gård,Näs | I5f | 27/31 | 930602 | 485 | 333 | 430 | | 264 | | | | | | | | |
| 150 | WindWorld | | 86 | Sigljavs 2,Näs | I5f | 27/31 | 930602 | 475 | | | | | | | | | | | | |
| 150 | WindWorld | | 87 | Sigljavs 3,Näs | I5i | 27/31 | 930602 | 475 | 333 | 261 | | 103 | 100 | | | | | | | |
| 150 | WindWorld | | 540 | Närvind Långman,När | J5h | 27/31 | 930712 | 438 | 324 | 377 | 153 | 378 | 96 | | | | | | | |
| 150 | WindWorld | | 76 | Velanda gård,Trollhättan | C8a | 27/41 | 930819 | 200 | 91 | 100 | | 69 | | | | | | | | |
| 150 | WindWorld | | 92 | Mellby,Mellby | C4e | 27/41 | 931010 | 360 | | | | | | | | | | | | |
| 150 | WindWorld | | 549 | JMR Vindfarm Cindy,Näs | I5f | 27/31 | 931105 | 475 | 237 | 393 | 109 | 342 | 100 | 18 | | | | | | |
| 150 | WindWorld | | 548 | JMR Vindfarm Linnéa,Näs | I5f | 27/31 | 931105 | 475 | 188 | 393 | 109 | 342 | 100 | 18 | | | | | | |
| 150 | WindWorld | | 547 | JMR Vindfarm Amanda,Näs | I5f | 27/31 | 931105 | 475 | 190 | 393 | 16 | 249 | 94 | | | | | | | |
| 150 | WindWorld | | 84 | Österudd Maria,Näs | I5f | 27/31 | 931110 | 515 | 426 | 517 | | 319 | | | | | | | | |
| 150 | WindWorld | | 95 | Vindlekan 1,Mellerud | C9a | 27/40 | 931117 | 300 | | | | | | | | | | | | |
| 150 | WindWorld | | 98 | Grälle,Kärrgård | C4e | 27/41 | 940126 | 370 | 270 | | 21 | 21 | 100 | 21 | 63 | | | | | |
| 150 | WindWorld | | 99 | Tjauls,Lummelunda | J7a | 27/41 | 940301 | 320 | | | | | | | | | | | | |
| 150 | WindWorld | | 107 | Stureholms gård,Ödåkra | C3d | 27/41 | 940801 | 380 | 269 | 339 | 155 | 332 | 100 | 13 | 38 | | | | | |
| 150 | WindWorld | | 176 | JMR Vindfarm Ellenor,Näs | I5i | 27/31 | 950101 | 475 | 288 | 266 | 122 | 294 | 100 | 12 | 60 | | | | | |
| 150 | WindWorld | | 132 | Hälle Ranch,Stenungsund | - | 27/40 | 950404 | 250 | | | | | | | | | | | | |
| 150 | WindWorld | | 207 | Vallberga Gård I,Vallberga | - | 27/31 | 950615 | 340 | | | | | | | | | | | | |
| 150 | WindWorld | | 143 | Rödjans Gård,Bolstad | C9a | 27/41 | 950825 | 260 | 143 | 160 | 74 | 171 | 100 | 0 | 0 | | | | | |
| 150 | WindWorld | | 144 | Nygården 4:1,Nygården | - | 27/41 | 950927 | 260 | 186 | 259 | 114 | 273 | 100 | 11 | 48 | | | | | |
| 150 | WindWorld | | 145 | Bonnarp 1:1,Bonnarp | C4e | 27/40 | 951018 | 358 | 172 | 77 | | 24 | 100 | | | | | | | |
| 150 | WindWorld | | 220 | Haugraini,Näs | I5i | 27/31 | 961011 | 450 | 371 | 341 | | 124 | 100 | | | | | | | |
| 150 | 30 Bonus | | 400 | Brattefors,Brattefors gård | - | 15/30 | 990901 | 200 | 150 | | | | | | | | | | | |
| 200 | Danwin | | 11 | Örby,Örby | C3a | 23/30 | 880831 | 325 | 176 | 226 | | 111 | | | | | | | | |
| 200 | 30 Vestas | | 510 | Kläffsön HM1,Hemsö | I18b | 25/29 | 891201 | 420 | | | | | | | | | | | | |
| 200 | 30 Vestas | | 511 | Kläffsön HM2,Hemsö | I18b | 25/29 | 891201 | 420 | | | | | | | | | | | | |
| 225 | 50 Vestas | | 517 | Värpinge Anna,Lund | C2e | 27/30 | 900201 | 500 | 301 | 421 | 185 | 404 | 100 | 16 | 56 | | | | | |
| 225 | 50 Vestas | | 518 | Värpinge Bella,Lund | C2e | 27/30 | 900201 | 500 | 287 | 386 | 176 | 374 | 100 | 16 | 52 | | | | | |
| 225 | 50 Vestas | | 22 | Braheskolan,Visingsö | E7g | 27/30 | 901206 | 500 | 303 | 393 | 198 | 426 | 100 | 17 | 55 | | | | | |
| 225 | 50 Vestas | | 502 | Seglaberga II,Laholm | C4e | 27/30 | 910118 | | 320 | 386 | 193 | 400 | 100 | 17 | | | | | | |
| 225 | 50 Vestas | | 24 | Ölandstok,Grönhögen | G3i | 27/30 | 910710 | 580 | 435 | 563 | 234 | 559 | 100 | 30 | 75 | | | | | |
| 225 | 50 Vestas | | 25 | Solvändan,Grönhögen | G3i | 27/30 | 910710 | 580 | 412 | 530 | 225 | 524 | 100 | 28 | 66 | | | | | |
| 225 | 50 Vestas | | 520 | Galtås Syd,Glommen | B5f | 27/30 | 910712 | 450 | | | | | | | | | | | | |
| 225 | 50 Vestas | | 521 | Galtås Nord,Glommen | B5f | 27/30 | 910712 | 450 | | | | | | | | | | | | |
| 225 | 50 Vestas | | 27 | Tägneby,Hästhölmén | E8b | 27/30 | 910905 | 440 | 380 | 353 | 210 | 519 | 99 | 22 | 66 | | | | | 3 |
| 225 | 50 Vestas | | 526 | Bäckagård V,Tväåker | B5f | 27/30 | 911016 | 500 | 375 | 447 | 200 | 462 | 100 | 16 | 59 | | | | | |
| 225 | 50 Vestas | | 522 | Bäckagård I,Tväåker | B5f | 27/30 | 911016 | 500 | 386 | 464 | 210 | 481 | 100 | 17 | 63 | | | | | |
| 225 | 50 Vestas | | 523 | Bäckagård II,Tväåker | B5f | 27/30 | 911016 | 500 | 381 | 455 | 207 | 469 | 100 | 17 | 62 | | | | | |
| 225 | 50 Vestas | | 524 | Bäckagård III,Tväåker | B5f | 27/30 | 911016 | 500 | 372 | 463 | 208 | 479 | 100 | 17 | 62 | | | | | |
| 225 | 50 Vestas | | 525 | Bäckagård IV,Tväåker | B5f | 27/30 | 911016 | 500 | 382 | 456 | 207 | 476 | 100 | 17 | 62 | | | | | |
| 225 | 50 Vestas | | 528 | Bäckagård VII,Tväåker | B5f | 27/30 | 911016 | 500 | 364 | 435 | 200 | 452 | 100 | 17 | 60 | | | | | |
| 225 | 50 Vestas | | 527 | Bäckagård VI,Tväåker | B5f | 27/30 | 911016 | 500 | 375 | 449 | 202 | 463 | 100 | 17 | 61 | | | | | |
| 225 | 50 Vestas | | 28 | Mårten,Grötlingbo | J5g | 27/30 | 911025 | 466 | 381 | 452 | 213 | 474 | 100 | 25 | 72 | | | | | |
| 225 | 50 Vestas | | 30 | Sjöbergs Säteri,Lugnäs | D9b | 27/30 | 911111 | 400 | 230 | 290 | 142 | 311 | 97 | 16 | 58 | | | | | |
| 225 | 50 Vestas | | 34 | Vitsippan,Grönhögen | G3i | 27/30 | 911210 | 580 | 465 | 537 | 250 | 553 | 100 | 30 | 77 | | | | | |
| 225 | 50 Vestas | | 33 | Tovsippan,Grönhögen | G3i | 27/30 | 911210 | 580 | 481 | 428 | 255 | 615 | 100 | 32 | 80 | | | | | |
| 225 | 50 Vestas | | 32 | Kedumsvik,Lidköping | C8h | 27/30 | 911211 | 362 | 223 | 271 | 162 | 291 | 98 | 11 | 50 | | | | | |
| 225 | 50 Vestas | | 49 | Vindella,Landskrona | C2g | 27/31 | 920116 | 582 | 361 | 402 | 194 | 405 | 100 | 6 | 22 | | | | | |
| 225 | 50 Vestas | | 503 | | | | | | | | | | | | | | | | | |

| Ny * | Effekt (kW) | | Fabrikat | Nr | Anläggning Benämning, Ort | Placering Karta | D/H (m) | I drift | Ber MWh | 2006 MWh | 2007 MWh | 2008 MWh | 12mån MWh | 12mån % | Månad MWh | Tid % | Hindertid (tim) | | | | |
|------|-------------|-----------|----------|-----------------------------|------------------------------|--------------------|------------|---------|------------|-------------|-------------|-------------|--------------|------------|--------------|----------|-----------------|-----|-----|----|-----|
| | Hög | Låg | | | | | | | | | | | | | | | MS | YNS | OYS | PU | OPS |
| 225 | 50 | Vestas | 63 | Bösarp,Trelleborg | C1i | 27/25 | 921215 | 472 | 383 | 487 | 197 | 453 | 99 | 25 | 68 | | | | | | |
| 225 | 50 | Vestas | 545 | Hjärtholmen Abel,Göteborg | B7a | 27/31 | 930105 | 550 | 498 | 578 | 245 | 611 | 100 | 24 | 73 | | | | | | |
| 225 | 50 | Vestas | 544 | Hjärtholmen Set,Göteborg | B7a | 27/31 | 930105 | 550 | 487 | 567 | 242 | 599 | 100 | 23 | 71 | | | | | | |
| 225 | 50 | Vestas | 65 | August,Visingsö | E7g | 27/31 | 930107 | 480 | 317 | 422 | 212 | 454 | 97 | 22 | 59 | | | | | | |
| 225 | 50 | Vestas | 68 | Kristinelund 1,Ventlinge | G3i | 27/31 | 930109 | 580 | 507 | 618 | 262 | 627 | 100 | 35 | 77 | | | | | | |
| 225 | 50 | Vestas | 69 | Kristinelund 2,Ventlinge | G3i | 27/31 | 930109 | 580 | 492 | 609 | 258 | 616 | 100 | 34 | 77 | | | | | | |
| 225 | 50 | Vestas | 70 | Kristinelund 3,Ventlinge | G3i | 27/31 | 930109 | 580 | 488 | 609 | 258 | 616 | 100 | 34 | 76 | | | | | | |
| 225 | 50 | Vestas | 541 | Slitevind I,Näs | I5f | 27/30 | 930120 | 600 | 456 | 579 | 259 | 609 | 99 | 24 | 74 | | 19 | | | 4 | |
| 225 | 50 | Vestas | 546 | Hjärtholmen Axel,Göteborg | B7a | 27/31 | 930616 | 550 | 491 | 533 | 240 | 564 | 95 | 23 | 72 | | | | | | |
| 225 | 50 | Vestas | 83 | Berta,Simris | E2a | 27/32 | 930923 | 480 | 412 | 457 | 180 | 478 | 99 | 22 | 68 | | | | | | |
| 225 | 50 | Vestas | 82 | Österlervind,Simris | E2a | 27/32 | 930923 | 480 | 451 | 542 | 171 | 470 | 98 | 18 | 61 | 16 | | | | | |
| 225 | 50 | Vestas | 81 | Appunamöllan,Appuna | F8d | 27/32 | 931013 | 353 | | | | | | | | | | | | | |
| 225 | 50 | Vestas | 94 | Kerstin,Smedjeholm | B5c | 27/31 | 931209 | 550 | 484 | 571 | 242 | 595 | 100 | 21 | 61 | | | | | | |
| 225 | 50 | Vestas | 96 | Viktor,Simris | E2a | 27/32 | 940112 | 480 | 423 | 512 | 150 | 426 | 99 | | | | | | | | |
| 225 | 50 | Vestas | 101 | Blåsippa,Grönhögen | G3i | 27/30 | 940126 | 580 | 445 | 553 | 229 | 561 | 100 | 28 | 77 | | | | | | |
| 225 | 50 | Vestas | 100 | Gulsippa,Grönhögen | G3i | 27/30 | 940126 | 580 | 391 | 501 | 221 | 505 | 100 | 28 | 74 | | | | | | |
| 225 | 50 | Vestas | 97 | Almetorps Säteri,Lavad | C8e | 27/32 | 940202 | 320 | 186 | 253 | 114 | 267 | 99 | 11 | 52 | | | | | | |
| 225 | 50 | Vestas | 113 | Elvira,Kistinge | C4e | 27/31 | 940623 | 384 | 330 | 405 | 176 | 398 | 100 | 16 | 44 | | | | | | |
| 225 | 50 | Vestas | 106 | Kristinelund Nord,Ventlinge | G3i | 27/31 | 940718 | 600 | 487 | 609 | | 361 | 100 | | | | | | | | |
| 225 | 50 | Vestas | 110 | El-Trendo,Tväåker | B5e | 27/31 | 940820 | 460 | 389 | 454 | 206 | 472 | 100 | 17 | 57 | | | | | | |
| 225 | 50 | Vestas | 109 | Lilla ELen,Tväåker | B5e | 27/31 | 940820 | 460 | 382 | 433 | 196 | 448 | 100 | 16 | 58 | | | | | | |
| 225 | 50 | Vestas | 112 | Rosendal,Rosendal | B5f | 27/31 | 940930 | 500 | 389 | 472 | 197 | 470 | 100 | 16 | 60 | | | | | | |
| 225 | 50 | Vestas | 116 | Sibylla af,Ångholmen | A7f | 29/31 | 941020 | 570 | 542 | 640 | 214 | 621 | 100 | 22 | 68 | | | | | | |
| 225 | 50 | Vestas | 111 | Hällemöllan 1,Rönnäng | A7f | 29/32 | 941021 | 600 | 550 | 615 | 257 | 672 | 99 | 23 | 66 | | | | | | |
| 225 | 50 | Vestas | 119 | Hägwards,Hall | J7e | 29/31 | 941215 | 410 | 347 | 438 | 195 | 448 | 98 | 19 | 69 | 5 | | | | | |
| 225 | 50 | Vestas | 121 | Hornbore,Hamburgsund | A9c | 29/31 | 941216 | 500 | 306 | 271 | 116 | 332 | 100 | 16 | 71 | | | | | | |
| 225 | 50 | Vestas | 120 | Vivi,Visingsö | E7g | 29/31 | 941228 | 530 | 339 | 167 | 135 | 165 | 100 | 24 | 52 | | | | | | |
| 225 | 50 | Vestas | 134 | Öllevind,Öllöv | C4a | 27/31 | 950601 | 540 | 466 | 573 | 254 | 583 | 100 | 22 | 59 | | | | | | |
| 225 | 50 | Vestas | 138 | Landskronavind,Landskron | C2g | 29/31 | 950815 | 520 | 307 | 283 | 195 | 361 | 91 | 6 | 19 | | | | | | |
| 225 | 50 | Vestas | 136 | Nuntorpskolan,Brålanda | B8i | 29/31 | 950824 | 325 | 190 | 278 | 120 | 293 | 100 | 13 | 46 | | | | | | |
| 225 | 50 | Vestas | 141 | Elmer II,Mosås | - | 29/31 | 950912 | 320 | 200 | 269 | 109 | 268 | 100 | 10 | 43 | | | | | | |
| 225 | 50 | Vestas | 142 | Stella af Rönnäng,Rönnäng | A7f | 29/31 | 950918 | 550 | 491 | 591 | 238 | 612 | 100 | 20 | 66 | | | | | | |
| 225 | 50 | Vestas | 148 | Önahloms Gärd 5,Tveta | C10b | 29/34 | 951108 | 417 | 402 | 464 | 199 | 516 | 100 | 22 | 54 | | | | | | |
| 225 | 50 | Vestas | 177 | Frیدهborg,Furåsa Norrgård | E8f | 29/31 | 960119 | 410 | 343 | 441 | | 262 | | | | | | | | | |
| 225 | 50 | Vestas | 178 | Zepyrus af Hov,Ålmeestad | D7d | 29/31 | 960221 | 332 | 174 | 221 | 108 | 231 | 100 | 10 | 49 | | | | | | |
| 225 | 50 | Vestas | 569 | Ingel 1,Östra Ingelstad | D2c | 29/31 | 960320 | 460 | 435 | 529 | 165 | 476 | 100 | 26 | 61 | | | | | | |
| 225 | 50 | Vestas | 570 | Ingel 2,Östra Ingelstad | D2c | 29/31 | 960320 | 460 | 413 | 514 | 221 | 517 | 100 | 24 | 60 | | | | | | |
| 225 | 50 | Vestas | 197 | Önnevind,Önnestad | D3f | 29/31 | 960511 | 320 | 192 | 262 | 80 | 203 | 100 | | | | | | | | |
| 225 | 50 | Vestas | 196 | Arendals Vind,Arendal | A8e | 29/31 | 960620 | 415 | 232 | 276 | 82 | 232 | 93 | 13 | 62 | | | 20 | | | |
| 225 | 50 | Vestas | 200 | Lunden,Gårdhem | B8c | 29/30 | 960701 | 330 | 191 | 247 | 88 | 239 | 100 | 0 | 0 | | | | | | |
| 225 | 50 | Vestas | 573 | Stora Bjärs 1,Stenkyrka | J7a | 29/30 | 960705 | 450 | 323 | 392 | 182 | 410 | 99 | 18 | 68 | | | | | | |
| 225 | 50 | Vestas | 215 | Kälvene,Kälvene | D7h | 29/31 | 960828 | 330 | 246 | 317 | 151 | 330 | 99 | 15 | 58 | | | | | | |
| 225 | 50 | Vestas | 576 | Hovby 2,Hovby | D3c | 29/31 | 960903 | 400 | 248 | 334 | 166 | 328 | 100 | 17 | 53 | | | | | | |
| 225 | 50 | Vestas | 575 | Hovby 1,Hovby | D3c | 29/31 | 960903 | 400 | 241 | 344 | 172 | 340 | 99 | 18 | 53 | | | | | | |
| 225 | 50 | Vestas | 214 | Krågevind,Önnestad | D3f | 29/31 | 960919 | 320 | | | | | | | | | | | | | |
| 225 | 50 | Vestas | 235 | Kristinelund 5,Ventlinge | G3i | 27/31 | 961106 | 600 | 547 | 686 | 289 | 696 | 100 | 39 | 78 | | | | | | |
| 225 | 50 | Vestas | 234 | Gullvivan,Grönhögen | G3i | 29/32 | 961107 | 570 | 451 | 565 | 29 | 346 | 100 | 29 | 72 | | | | | | |
| 225 | 50 | Vestas | 233 | Linnea,Grönhögen | G3i | 29/32 | 961108 | 570 | 443 | 545 | 228 | 545 | 100 | 30 | 71 | | | | | | |
| 225 | 50 | Vestas | 241 | Månsunen,Gislöv | E2a | 29/32 | 970217 | 525 | 446 | 536 | 243 | 535 | 100 | 26 | 63 | | | | | | |
| 225 | 50 | Vestas | 250 | Ingel 3,Östra Ingelstad | D2c | 29/32 | 971017 | 460 | 441 | 539 | 230 | 547 | 100 | 26 | 66 | | | | | | |
| 225 | 50 | Vestas | 257 | Hällemöllan 2,Rönnäng | - | 29/32 | 971111 | 600 | 572 | 676 | 245 | 689 | 98 | 24 | 73 | | | | | | |
| 225 | 50 | Vestas | 272 | Agrivind,Grötlingbo | J5g | 29/30 | 980110 | 580 | 412 | 485 | 215 | 493 | 98 | 28 | 70 | | | | 4 | | |
| 225 | 50 | Vestas | 372 | Luttraverket,Liden Luttra | - | 29/31 | 981217 | 380 | 305 | 408 | | 238 | | | | | | | | | |
| 225 | 50 | Vestas | 368 | Ann-EL-i,Hångsdala | D7h | 29/30 | 990104 | 370 | 341 | 431 | 185 | 436 | 100 | 22 | 65 | | | | | | |
| 225 | 50 | Vestas | 375 | Gesvinto, Skåls Vindk,Näs | I5f | 29/30 | 990508 | 620 | 505 | 628 | 274 | 655 | 98 | 27 | 71 | 2 | | | | 4 | |
| 225 | 50 | Vestas | 761 | Lunden 2,Gårdhems-Lunde | B8c | 29/32 | 040426 | 310 | 222 | 291 | 138 | 319 | 100 | 16 | 51 | | | | | | |
| 225 | 50 | Vestas | 885 | Bränneriet,Vänersnäs | C8g | 29/31 | 060201 | 250 | | 20 | 127 | 147 | 100 | 13 | 53 | | | | | | |
| 230 | | Enercon | 308 | Strömmaskolan,Sätilla | B6i | 30/52 | 980509 | 400 | 172 | 165 | 88 | 164 | 100 | 11 | 64 | | | | | | |
| 250 | | WindWorld | 156 | Äng-EL,Veinge | C4e | 29/41 | 951123 | 365 | 286 | 363 | 169 | 365 | 100 | 16 | 51 | | | | | | |
| 250 | | WindWorld | 157 | Ax-El,Genevad | C4e | 29/41 | 951124 | 420 | 303 | | | | | | | | | | | | |
| 250 | | WindWorld | 208 | Nya Skottorp 1,Skottorp | - | 29/41 | 960514 | 420 | | | | | | | | | | | | | |
| 250 | | WindWorld | 185 | Orr-El,Orreberg | C4e | 29/40 | 960515 | 390 | 346 | 422 | 183 | 425 | 100 | 11 | 39 | | | | | | |
| 250 | | WindWorld | 187 | Värestorps Vind,Värestorp | C4b | 29/41 | 960529 | 325 | 288 | 370 | 175 | 365 | 100 | 14 | 43 | | | | | | |
| 250 | | WindWorld | 198 | Åkersdal,Glimminge | C3g | 29/40 | 960606 | | 196 | 524 | | 288 | | | | | | | | | |
| 250 | | WindWorld | 203 | Bosse 1,Näs | I5i | 29/41 | 960701 | 550 | | 13 | | 13 | 100 | | | | | | | | |
| 250 | | WindWorld | 205 | Agro 1,Lummelunda | J7a | 29/42 | 960718 | 483 | 322 | 430 | 164 | 445 | 99 | 23 | 71 | | | | | | |
| 250 | | WindWorld | 206 | Agro 2,Lummelunda | J7a | 29/42 | 960719 | 483 | 342 | 272 | 77 | 163 | 100 | 11 | | | | | | | |
| 250 | | WindWorld | 212 | Bosse 2,Näs | I5i | 29/41 | 960928 | 550 | 512 | | | | | | | | | | | | |
| 250 | | WindWorld | 589 | Kalmar Energi, Degerhamn, | - | 29/30 | 961025 | 563 | 430 | 374 | 100 | 377 | 89 | | | | | | | | |
| 250 | | WindWorld | 590 | Kalmar Energi, Degerhamn, | - | 29/30 | 961025 | 563 | 196 | 62 | 65 | 127 | 74 | | | | | | | | |
| 250 | | WindWorld | 591 | Kalmar Energi, Degerhamn, | - | 29/30 | 961025 | 563 | 425 | 440 | 163 | 382 | 96 | | | | | | | | |
| 250 | 50 | NEG Micon | 53 | Silvia af,Flatgarn | H11b | 26/30 | 920810 | 342 | | | | | | | | | | | | | |
| 250 | 50 | NEG Micon | 78 | Justinia af Galtabäck,Galta | B5f | 26/30 | 930903 | 440 | | | | | | | | | | | | | |
| 400 | | Vestas | 35 | Hardeberga,Lund | C2f | 35/30 | 920117 | | | | | | | | | | | | | | |
| 450 | | Bonus | 50 | Basteviksholmen 1,Lyse | A8f | 35/35 | 920617 | 1000 | 818 | 1121 | 435 | 1149 | 98 | 41 | 64 | 11 | | | 1 | | |
| 450 | | Bonus | 77 | Risholmen Marta,Göteborg | B7a | 37/37 | 930727 | 1100 | 862 | 970 | 469 | 1107 | 100 | 42 | 59 | | | | | | |
| 490 | | WindWorld | 72 | Holmbod Inga,Näs | I5f | 37/41 | 930320 | 1185 | 711 | 1056 | 126 | 757 | 100 | 30 | 59 | | | | | | |
| 490 | | WindWorld | 71 | Holmbod Holmina,Näs | I5f | 37/41 | 930320 | 1185 | 994 | 1176 | 549 | 1241 | 98 | 50 | 71 | | | | | | |
| 490 | | WindWorld | 102 | ID340,Näs | I5f | 37/41 | 940406 | 1185 | 931 | | | | | | | | | | | | |
| 490 | | WindWorld | 104 | Annex 1,Näs | I5f | | | | | | | | | | | | | | | | |

| Ny * | Effekt (kW) | | Fabrikat | Nr | Anläggning Benämning, Ort | Placering Karta | D/H (m) | I drift | Ber MWh | 2006 MWh | 2007 MWh | 2008 MWh | 12mån MWh | 12mån % | Månad MWh | Tid % | Hindertid (tim) | | | | TF |
|------|-------------|-----|-------------------------------|------|------------------------------|--------------------|------------|---------|------------|-------------|-------------|-------------|--------------|------------|--------------|----------|-----------------|-----|-----|-----|----|
| | Hög | Låg | | | | | | | | | | | | | | | MS | YNS | OYS | PU | |
| 500 | Vestas | 543 | Slitevind III,Näs | I5f | 39/41 | 930209 | 1350 | 1039 | 1288 | 593 | 1363 | 99 | 56 | 64 | 19 | | | | | 4 | |
| 500 | Vestas | 504 | Seglaberga IV,L.Tjärby | C4e | 39/40 | 930701 | 1000 | 538 | 782 | 367 | 771 | 100 | 32 | | | | | | | | |
| 500 | Vestas | 80 | Molly Tängne,Orust | A7i | 39/41 | 930923 | 1350 | 994 | 1314 | 505 | 1352 | 99 | 43 | 58 | 12 | | | | | | |
| 500 | Vestas | 90 | Elektro Glitne,Näs | I5f | 39/41 | 931220 | 1200 | 1030 | 1305 | 596 | 1380 | 99 | 59 | 62 | | | | | | 4 | |
| 500 | Vestas | 91 | Rehn Kraft I,Näs | I5f | 39/41 | 931221 | 1200 | 972 | 1196 | 557 | 1266 | 99 | 52 | 61 | | | | | | 4 | |
| 500 | Vestas | 103 | Storegården,Ås | C8d | 39/41 | 940428 | | 521 | 690 | 325 | 727 | 97 | 33 | 49 | | | | | | 60 | |
| 500 | Vestas | 108 | Stavar Bursvind,Näs | I5f | 39/41 | 940826 | 1200 | 1156 | 1404 | 631 | 1490 | 100 | 59 | 63 | | | | | | | |
| 500 | Vestas | 114 | Barsebäck III,Barsebäck | C2h | 39/40 | 941017 | 1150 | 935 | 1138 | 535 | 1230 | 100 | 41 | 48 | | | | | | | |
| 500 | Vestas | 550 | Vindudd IV,Grötlingbo | J5g | 39/41 | 941115 | 1050 | 932 | 1114 | 521 | 1168 | 98 | 63 | 66 | 3 | | | | | | |
| 500 | Vestas | 551 | Vindudd V,Grötlingbo | J5g | 39/41 | 941115 | 1050 | 924 | 1090 | 511 | 1143 | 98 | 62 | 56 | | | | | | | |
| 500 | Vestas | 127 | Ingeborg,Hogenäset | A8f | 39/39 | 950125 | 1100 | 954 | 1146 | 456 | 1156 | 98 | 44 | 61 | 13 | 6 | | | | | |
| 500 | Vestas | 124 | Sophie Hogenäset,Sotenäs | A8f | 39/41 | 950131 | 1100 | 969 | 1133 | 481 | 1167 | 100 | 47 | 64 | | | | | | | |
| 500 | Vestas | 125 | Häckenäs Betty,Vadstena | E8f | 39/41 | 950209 | 1120 | 762 | 1030 | 437 | 1059 | 100 | 35 | 46 | | | | | | | |
| 500 | Vestas | 128 | Sönnertorp I,Sönnertorp | C4a | 39/41 | 950213 | 890 | 771 | 999 | 481 | 1016 | 100 | 42 | 54 | | | | | | | |
| 500 | Vestas | 552 | Slitevind VII,Näs | I5f | 39/41 | 950316 | 1200 | 949 | 1199 | 533 | 1244 | 98 | 37 | 52 | | | | | | 4 | |
| 500 | Vestas | 553 | Ryftes Maria,Näs | I5f | 39/41 | 950316 | 1200 | 925 | 1177 | 538 | 1235 | 99 | 48 | 64 | | | | | 5 | 4 | |
| 500 | Vestas | 131 | Sönnertorp II,V:a Karup | C4a | 39/40 | 950331 | 890 | 888 | 1044 | 511 | 1065 | 100 | 44 | 54 | | | | | | | |
| 500 | WindWorld | 151 | ID481,Näs | I5f | 37/41 | 950927 | 1250 | 841 | | | | | | | | | | | | | |
| 500 | WindWorld | 150 | ID480,Näs | I5f | 37/41 | 950927 | 1200 | 900 | 487 | 504 | 991 | 100 | 44 | 70 | | | | | | | |
| 500 | WindWorld | 158 | Linds,Näs | I5f | 37/41 | 951001 | 1200 | 951 | 1278 | 579 | 1333 | 100 | 49 | 68 | | | | | | | |
| 500 | WindWorld | 561 | BEA 1,Näs | I5f | 37/41 | 951001 | 1200 | 414 | 1041 | 517 | 1197 | 100 | 44 | 67 | | | | | | | |
| 500 | WindWorld | 152 | Ahlsten Energi AB,Näs | I5f | 37/41 | 951002 | 1250 | 796 | 1115 | 542 | 1312 | 100 | 51 | 68 | | | | | | | |
| 500 | Enercon | 147 | Ruuthsbo I,Ruuthsbo | D1h | 40/42 | 951020 | 1500 | 1134 | 1378 | 579 | 1350 | 98 | 71 | 77 | | | | | 5 | 13 | |
| 500 | WindWorld | 153 | LSG (fd Vindkomp. 1),Näs | I5f | 37/41 | 951101 | 1150 | 760 | 1049 | 453 | 1050 | 100 | 44 | 64 | | | | | | | |
| 500 | WindWorld | 554 | Greifenstein Wind AB 1,Nä | I5f | 37/41 | 951116 | 1150 | 473 | 925 | 446 | 995 | 100 | 39 | 64 | | | | | | | |
| 500 | WindWorld | 155 | ID485,Näs | I5f | 37/41 | 951120 | 1200 | 866 | 1118 | 492 | 1152 | 100 | 44 | 67 | | | | | | | |
| 500 | WindWorld | 555 | Greifenstein Wind AB 2,Nä | I5f | 37/41 | 951120 | 1150 | 644 | 908 | 433 | 905 | 100 | 34 | 58 | | | | | | | |
| 500 | WindWorld | 562 | BEA 2a,Näs | I5f | 37/41 | 951210 | 1217 | 966 | 1194 | 531 | 1233 | 100 | 48 | 68 | | | | | | | |
| 500 | WindWorld | 563 | BEA 2b,Näs | I5f | 37/41 | 951210 | 1217 | 864 | 1092 | 461 | 1098 | 100 | 44 | 66 | | | | | | | |
| 500 | WindWorld | 564 | BEA 2c,Näs | I5f | 37/41 | 951210 | 1217 | 924 | 1201 | 526 | 1242 | 100 | 46 | 63 | | | | | | | |
| 500 | WindWorld | 167 | ID 491,Näs | I5f | 37/41 | 951214 | 1200 | 464 | 1074 | 519 | 1131 | 100 | 43 | | | | | | | | |
| 500 | WindWorld | 168 | Burgstein Wind,Näs | I5f | 37/41 | 951214 | 1150 | 819 | 1053 | 434 | 1046 | 100 | 42 | 64 | | | | | | | |
| 500 | Enercon | 566 | Slitevind X,Smöjen | J7c | 40/50 | 951215 | 1300 | 1123 | 1104 | 546 | 1241 | 100 | 58 | 64 | | | | | | | |
| 500 | Enercon | 567 | Slitevind XI,Furillen | J7c | 40/50 | 951219 | 1400 | 1237 | 1361 | 600 | 1430 | 100 | 71 | 89 | | | | | | | |
| 500 | WindWorld | 162 | Lucia af Boholmen,Hammar | D10d | 37/41 | 951219 | 800 | 301 | 700 | 313 | 785 | 100 | 31 | 59 | | | | | | | |
| 500 | Enercon | 568 | Slitevind XII,Furillen | J7c | 40/50 | 951220 | 1400 | 1239 | 1371 | 640 | 1490 | 100 | 73 | 87 | | | | | | | |
| 500 | WindWorld | 559 | Annelöv I,Landskrona | C2h | 37/41 | 951220 | | 780 | 732 | 459 | 706 | 100 | 45 | 56 | | | | | | | |
| 500 | WindWorld | 171 | Grupp 8,Näs | I5f | 37/41 | 951220 | 1200 | 532 | 756 | 476 | 1101 | 100 | 43 | 62 | | | | | | | |
| 500 | WindWorld | 172 | Si-Vind,Lysekil | A8f | 37/40 | 951221 | 950 | 738 | 848 | 354 | 867 | 100 | 30 | 70 | | | | | | | |
| 500 | Enercon | 565 | Slitevind IX,Smöjen | J7c | 40/50 | 951222 | 1300 | 1030 | 1072 | 511 | 1119 | 100 | 61 | 79 | | | | | | | |
| 500 | Vestas | 186 | Åstorp 1,Åstorp | C3e | 39/40 | 960216 | 860 | 668 | 822 | 397 | 825 | 91 | 11 | 15 | | | | | | 423 | |
| 500 | WindWorld | 560 | Annelöv II,Landskrona | C2h | 37/41 | 960307 | | 739 | 959 | 414 | 901 | 100 | 44 | 63 | | | | | | | |
| 500 | Enercon | 181 | Slitevind XIII,Larsbo Glemm | D1i | 40/50 | 960513 | 1300 | 1208 | 1429 | 611 | 1413 | 100 | 82 | 83 | | | | | | | |
| 500 | Enercon | 182 | Slitevind XIV,Larsbo Glem | D1i | 40/50 | 960513 | 1300 | 1211 | 1388 | 603 | 1366 | 100 | 79 | 82 | | | | | | | |
| 500 | Enercon | 184 | Slitevind XV,Ryngge S | D2a | 40/50 | 960515 | 1300 | 1019 | 1277 | 501 | 1186 | 100 | 89 | 81 | | | | | | | |
| 500 | Enercon | 183 | Slitevind XVI,Ryngge N | D2a | 40/50 | 960515 | 1300 | 1067 | 1337 | 555 | 1279 | 100 | 71 | 82 | | | | | | | |
| 500 | WindWorld | 195 | Ärröd 220001,Ärröd | D2h | 37/41 | 960523 | 710 | 97 | 833 | | 420 | | | | | | | | | | |
| 500 | WindWorld | 238 | Månstorps Gärd,Laholm | D4b | 37/41 | 960619 | 800 | | | | | | | | | | | | | | |
| 500 | WindWorld | 572 | Kullavind,Nyhamnsläge | B3i | 37/41 | 960620 | | 835 | 1121 | 472 | 1075 | 100 | 38 | 52 | | | | | | | |
| 500 | WindWorld | 571 | Kullamöllan,Nyhamnsläge | B3i | 37/41 | 960620 | | 841 | 1096 | 117 | 698 | 100 | 27 | 34 | | | | | | | |
| 500 | Vestas | 519 | Värpinge Clara,Lund | C2e | 39/40 | 960711 | 1050 | 711 | 945 | 396 | 890 | 100 | 38 | 47 | | | | | | | |
| 500 | Enercon | 209 | Österlövind II,Simris | E2a | 40/42 | 960825 | 1380 | 1280 | 1469 | 398 | 1195 | 98 | | | | | | | | | |
| 500 | WindWorld | 218 | Trollenäs,Trollenäs | C2i | 37/41 | 960829 | | 653 | 818 | 402 | 821 | 100 | 39 | 52 | | | | | | | |
| 500 | WindWorld | 216 | Legevind,Legeved | E3a | 37/41 | 960904 | 600 | 480 | 658 | 333 | 655 | 100 | 30 | 55 | | | | | | | |
| 500 | Enercon | 229 | Hog 1,Stenungsund | B7g | 40/42 | 961003 | 1050 | 787 | 897 | 421 | 1046 | 99 | 43 | 82 | | | | | 5 | | |
| 500 | Enercon | 230 | Hog 2,Stenungsund | B7g | 40/42 | 961003 | 1050 | 911 | 1034 | 431 | 1086 | 93 | 52 | 84 | 11 | | | | 9 | | |
| 500 | WindWorld | 219 | Billinge Energi,Näs | I5f | 37/41 | 961004 | 1400 | 1002 | 1065 | 334 | 971 | 100 | 36 | 50 | | | | | | | |
| 500 | Enercon | 592 | Humlekärr 1,Humlekärr | A8f | 40/42 | 961024 | 1300 | 1191 | 1469 | 541 | 1477 | 99 | 60 | 91 | | | | | | | |
| 500 | Enercon | 593 | Humlekärr 2,Humlekärr | A8f | 40/42 | 961024 | 1300 | 859 | 1428 | 511 | 1407 | 97 | 60 | 88 | | | | | | | |
| 500 | Enercon | 236 | Slitevind XVII,Eriksfält N Ö | D1i | 40/50 | 961211 | 1300 | 1364 | 1595 | 646 | 1549 | 100 | 82 | 86 | | | | | | | |
| 500 | Enercon | 237 | Slitevind XVIII,Eriksfält S Ö | D1i | 40/50 | 961211 | 1300 | 1328 | 1555 | 620 | 1505 | 100 | 79 | 83 | | | | | | | |
| 500 | Vestas | 239 | Åstorp 2,Åstorp | C3e | 39/40 | 970204 | 950 | 725 | 916 | 413 | 871 | 99 | 41 | 46 | | | | | | | |
| 500 | Vestas | 247 | Lovisa,Örby | C3a | 39/40 | 970825 | 950 | 750 | 884 | 449 | 881 | 95 | 42 | 48 | | | | | | | |
| 500 | Enercon | 267 | Ryftes Kristina,Fole | J6g | 40/65 | 971218 | 1200 | 834 | 982 | 452 | 1021 | 100 | 57 | 90 | | | | | | | |
| 500 | Enercon | 264 | Isak,Klinterhamn | - | 40/50 | 971219 | 1300 | 651 | 843 | 502 | 1190 | 100 | 52 | 85 | | | | | | | |
| 500 | Enercon | 270 | Kyrkeby 2,Hangvar | J7b | 40/65 | 971220 | 1200 | 868 | 998 | 400 | 981 | 100 | 52 | 85 | | | | | | | |
| 500 | Enercon | 263 | Windbyggarna 1,Lärbro | J7b | 40/65 | 971220 | 1100 | 804 | 832 | 450 | 885 | 100 | 52 | 88 | | | | | | | |
| 500 | Enercon | 269 | Kyrkeby 1,Hangvar | J7b | 40/65 | 971220 | 1200 | 844 | 717 | 11 | 450 | 100 | 11 | 24 | | | | | | | |
| 500 | Vestas | 292 | Täppeshusen 2,Höganäs | C3d | 39/40 | 980402 | 1050 | 763 | 989 | 333 | 921 | 100 | 82 | 65 | | | | | | | |
| 500 | Vestas | 291 | Täppeshusen 1,Höganäs | C3d | 39/40 | 980402 | 1050 | 760 | 844 | 232 | 650 | 100 | 58 | 52 | | | | | | | |
| 500 | Enercon | 314 | St. Herrestad I,St. Herresta | D2b | 40/65 | 980712 | 1420 | 1353 | 1608 | 663 | 1580 | 100 | 82 | 86 | | | | | | | |
| 500 | Enercon | 317 | St. Herrestad II,St. Herresta | D2b | 40/65 | 980712 | 1420 | 1227 | 1480 | 624 | 1475 | 100 | 76 | 84 | | | | | | | |
| 500 | Enercon | 358 | Rydsgård I,Ville 61:8 | D2a | 40/65 | 981118 | 1400 | 1105 | 1374 | 572 | 1343 | 100 | 76 | 81 | | | | | | | |
| 500 | Enercon | 354 | Kadesjö I,Trunnerup 9:4 | D2a | 40/65 | 981119 | 1400 | 1150 | 1437 | 451 | 1272 | 100 | 63 | 84 | | | | | | | |
| 500 | Enercon | 355 | Kadesjö II,Trunnerup 9:4 | D2a | 40/65 | 981119 | 1400 | 1163 | 1376 | 598 | 1359 | 100 | 77 | 82 | | | | | | | |
| 500 | Enercon | 359 | Rydsgård II,Ville 61:8 | D2a | 40/65 | 981120 | 1400 | 1030 | 1330 | 563 | 1316 | 100 | 74 | 81 | | | | | | | |
| 500 | Enercon | 357 | Månslunda I,Månslunda | D2f | 40/65 | 981127 | 1350 | 1049 | 1264 | 538 | 1240 | 100 | 69 | 83 | | | | | | | |

| Ny * | Effekt (kW) | | Fabrikat | Nr | Anläggning Benämning, Ort | Placering Karta | D/H (m) | I drift | Ber MWh | 2006 MWh | 2007 MWh | 2008 MWh | 12mån MWh | 12mån % | Månad MWh | Tid % | Hindertid (tim) | | | | |
|------|-------------|-----|--------------------------------|------|------------------------------|--------------------|------------|---------|------------|-------------|-------------|-------------|--------------|------------|--------------|----------|-----------------|-----|-----|-----|-----|
| | Hög | Låg | | | | | | | | | | | | | | | MS | YNS | OYS | PU | OPS |
| 600 | Vestas | 160 | Ryftes Karolina,Näs | I5f | 42/41 | 951215 | 1400 | 1002 | 1284 | 581 | 1329 | 99 | 53 | 54 | 2 | | | | | 4 | |
| 600 | Vestas | 164 | BEA 5,Näs | I5f | 42/41 | 951220 | 1400 | 1046 | 1305 | 594 | 1377 | 93 | 53 | 55 | 38 | | | | | | |
| 600 | Vestas | 166 | Siral,Näs | I5f | 42/41 | 951221 | 1700 | 1171 | 1706 | 758 | 1790 | 99 | 67 | 62 | 7 | | | | | 4 | |
| 600 | Vestas | 165 | Tornfalken, Näs,Näs | I5f | 42/41 | 951221 | 1400 | 1021 | 1307 | 576 | 1338 | 98 | 51 | 54 | | | | | | 4 | |
| 600 | Vestas | 175 | Älvi,Näs | I5f | 42/41 | 960105 | 1400 | 899 | 1127 | 530 | 1208 | 98 | 43 | 45 | 14 | | | | 5 | 4 | |
| 600 | Vestas | 180 | Vårdkasberget,Härnösand | I17g | 44/40 | 960501 | 1100 | 1220 | 1086 | 400 | 1167 | 100 | 57 | 52 | | | | | | | |
| 600 | Vestas | 188 | Hjärtholmen Görel,Göteborg | B7a | 44/40 | 960502 | 1450 | 1409 | 1645 | 708 | 1738 | 100 | 68 | 60 | | | | | | | |
| 600 | Vestas | 189 | Hjärtholmen Boel,Göteborg | B7a | 44/40 | 960502 | 1450 | 1196 | 1457 | 680 | 1626 | 100 | 65 | 60 | | | | | | | |
| 600 | Vestas | 193 | Risholmen Eivind,Göteborg | B7a | 44/40 | 960503 | 1450 | 1271 | 1502 | 651 | 1584 | 100 | 62 | 58 | | | | | | | |
| 600 | Vestas | 190 | Risholmen Elvira,Göteborg | B7a | 44/40 | 960503 | 1450 | 1370 | 1142 | 691 | 1565 | 100 | 78 | 64 | | | | | | | |
| 600 | Vestas | 191 | Risholmen Elin,Göteborg | B7a | 44/40 | 960506 | 1450 | 1337 | 1343 | 458 | 1218 | 100 | 58 | 49 | | | | | | | |
| 600 | Vestas | 192 | Risholmen Eida,Göteborg | B7a | 44/40 | 960506 | 1450 | 1181 | 1495 | 624 | 1558 | 100 | 61 | 57 | | | | | | | |
| 600 | WindWorld | 202 | Stjerneman,Göteborg | B7a | 42/42 | 960601 | 1325 | | | | | | | | | | | | | | |
| 600 | Vestas | 194 | Lövstaviken 8,Falkenberg | B5c | 42/40 | 960601 | 1500 | 649 | 1294 | 547 | 1358 | 100 | 43 | 36 | | | | | | | |
| 600 | Vestas | 574 | Stora Bjärs 2,Stenkyrka | J7a | 44/40 | 960703 | 1100 | 817 | 981 | 262 | 820 | 85 | 44 | 58 | | | | | | 13 | |
| 600 | Vestas | 204 | Häberg 1,Flo | C8d | 44/50 | 960726 | 938 | 680 | 940 | 424 | 984 | 100 | 42 | 49 | | | | | | | |
| 600 | Vestas | 505 | Seglaberga V,L.Tjärby | - | 44/45 | 960916 | | 741 | 1005 | 462 | 978 | 100 | 39 | | | | | | | | |
| 600 | Vestas | 210 | BEA 8,När | J5h | 44/50 | 960917 | 1300 | 984 | 1200 | 565 | 1254 | 98 | 61 | 62 | | | | | | | |
| 600 | Vestas | 211 | Burgvind, Rigges1,När | J5h | 44/50 | 960920 | 1300 | 1015 | 1161 | 566 | 1220 | 98 | 63 | 63 | | | | | | | |
| 600 | Vestas | 584 | Gipsön 8,Landskrona | C2g | 42/41 | 961008 | 1500 | 1188 | 1455 | 704 | 1535 | 100 | 59 | 52 | | | | | | | |
| 600 | Vestas | 585 | Gipsön 9,Landskrona | C2g | 42/41 | 961008 | 1500 | 1165 | 1413 | 664 | 1454 | 99 | 54 | 46 | | | | | | | |
| 600 | Vestas | 586 | Gipsön 10,Landskrona | C2g | 42/41 | 961008 | 1500 | 1078 | 1336 | 570 | 1311 | 95 | 17 | 17 | | | | | | 216 | |
| 600 | Vestas | 577 | Gipsön 1,Landskrona | C2g | 42/41 | 961008 | 1500 | 927 | 1203 | 617 | 1344 | 98 | 50 | 44 | | | | | | | |
| 600 | Vestas | 587 | Gipsön 11,Landskrona | C2g | 42/41 | 961008 | 1500 | 930 | 1241 | 579 | 1335 | 99 | 44 | 42 | | | | | | | |
| 600 | Vestas | 588 | Gipsön 12,Landskrona | C2g | 42/41 | 961008 | 1500 | 912 | 1324 | 625 | 1360 | 100 | 46 | 44 | | | | | | | |
| 600 | Vestas | 583 | Gipsön 7,Landskrona | C2g | 42/41 | 961008 | 1500 | 1130 | 1416 | 682 | 1482 | 100 | 53 | 45 | | | | | | | |
| 600 | Vestas | 578 | Gipsön 2,Landskrona | C2g | 42/41 | 961014 | 1500 | 1048 | 1107 | 523 | 1037 | 94 | 53 | 42 | | | | | | | |
| 600 | Vestas | 579 | Gipsön 3,Landskrona | C2g | 42/41 | 961014 | 1500 | 1112 | 1317 | 651 | 1397 | 99 | 56 | 45 | | | | | | | |
| 600 | Vestas | 580 | Gipsön 4,Landskrona | C2g | 42/41 | 961014 | 1500 | 1166 | 1391 | 538 | 1335 | 100 | 52 | 38 | | | | | | | |
| 600 | Vestas | 582 | Gipsön 6,Landskrona | C2g | 42/41 | 961014 | 1500 | 1197 | 1403 | 628 | 1410 | 98 | 60 | 49 | | | | | | | |
| 600 | Vestas | 581 | Gipsön 5,Landskrona | C2g | 42/41 | 961014 | 1500 | 1127 | 1368 | 619 | 1390 | 99 | 56 | 43 | | | | | | | |
| 600 | NEG Micon | 228 | Duesgård,Tanumshede | A9c | 43/46 | 961015 | 1160 | 820 | 1004 | 323 | 976 | 86 | 0 | 0 | | | | | | 719 | |
| 600 | NEG Micon | 227 | Tannam,Tanumshede | A9f | 43/46 | 961015 | 1130 | 797 | 844 | 276 | 837 | 92 | 46 | 82 | | | | | | | |
| 600 | Vestas | 231 | Dalom,Hemsö | I18a | 44/40 | 961027 | 1165 | 827 | 715 | | 386 | 100 | | | | | | | | | |
| 600 | Vestas | 225 | Kulle 16,Näs | I5i | 44/50 | 961119 | 1300 | 1034 | 1268 | 583 | 1345 | 99 | 55 | 59 | | | | | 3 | | |
| 600 | Vestas | 224 | Kulle 14,Näs | I5i | 44/50 | 961119 | 1300 | 1040 | 1264 | 571 | 1330 | 99 | 63 | 60 | | | | | 3 | | |
| 600 | Vestas | 222 | Ryftes Hulda,Havdhem | I5i | 44/50 | 961119 | 1300 | 1055 | 1272 | 453 | 1206 | 94 | 62 | 60 | | | | | | 7 | |
| 600 | Vestas | 223 | Eksebo Kraft, Gustav,Havd | I5i | 44/50 | 961120 | 1300 | 943 | 1121 | 537 | 1159 | 92 | 57 | 58 | | | | | | | |
| 600 | Vestas | 232 | Lin Vind,Ledberg | F8e | 44/41 | 961203 | 875 | 554 | 771 | 340 | 778 | 100 | 32 | 42 | | | | | | | |
| 600 | WindWorld | 242 | Stjernarps gods,Eldsberga | - | 42/42 | 970301 | 950 | 670 | 765 | 437 | 807 | 88 | 35 | 38 | | | | | | | |
| 600 | Vestas | 249 | Backmöllan,Väggarp | C2i | 44/50 | 970924 | 1150 | 1022 | 1234 | 559 | 1181 | 100 | 54 | 42 | | | | | | | |
| 600 | Vestas | 248 | Slättäng 1,Slättäng | C2i | 44/50 | 970929 | 1100 | 847 | 1047 | 575 | 1230 | 100 | 59 | 47 | | | | | | | |
| 600 | Vestas | 290 | Vivian,Visingsö | - | 44/40 | 971025 | 1300 | 935 | 1186 | 566 | 1335 | 100 | 56 | 49 | | | | | | | |
| 600 | WindWorld | 271 | Skorteby, Storebror,Mantor | F8e | 42/45 | 971108 | 1000 | | | | | | | | | | | | | | |
| 600 | WindWorld | 312 | Hofby Vind, Ysby,Kövlinge | C4b | 42/49 | 971108 | 930 | 849 | 1105 | 447 | 1007 | 100 | 29 | 42 | | | | | | | |
| 600 | Vestas | 261 | Victoria,Hogenäset | - | 44/45 | 971110 | 1300 | 1178 | 1395 | 541 | 1404 | 98 | 44 | 51 | | | | | | | |
| 600 | Vestas | 289 | Lagmansberga,Skänninge | - | 44/55 | 971118 | 1023 | 927 | 1215 | 515 | 1231 | 100 | 54 | 55 | | | | | | | |
| 600 | WindWorld | 260 | Nya Skottorp 2,Skottorp | - | 42/50 | 971120 | 1000 | 835 | 1071 | 479 | 1073 | 100 | 46 | 42 | | | | | | | |
| 600 | Vestas | 280 | Trärke, Helga,Björkön | H17c | 44/55 | 971121 | 1190 | 937 | 1065 | 423 | 1104 | 100 | 67 | 59 | | | | | | | |
| 600 | WindWorld | 259 | Vallberga Gärd II,Vallberga | - | 42/50 | 971124 | 1000 | | | | | | | | | | | | | | |
| 600 | WindWorld | 309 | Björkliden,St. Isie | C1i | 42/45 | 971125 | 1490 | 1149 | 1578 | 593 | 1445 | 96 | 75 | 59 | | | | | | | |
| 600 | WindWorld | 258 | Mellby Kraft AB 1,Trulstorp | - | 42/50 | 971211 | 1030 | | | | | | | | | | | | | | |
| 600 | WindWorld | 311 | Lilla Isie,Lilla Isie | C1i | 42/45 | 971212 | 1500 | 1110 | 1676 | 718 | 1631 | 100 | 80 | 59 | | | | | | | |
| 600 | Vestas | 265 | Rehn Kraft II, Näs,Näs | I5f | 44/40 | 971221 | 1620 | 1370 | 1656 | 761 | 1790 | 99 | 72 | 62 | | | 5 | | | 4 | |
| 600 | Vestas | 266 | Tornsvan,Slite | J7b | 44/55 | 971229 | 1220 | 793 | 919 | 444 | 955 | 99 | 41 | 50 | | | | | | | |
| 600 | WindWorld | 304 | Kastlösa Väst V14,Kastlösa | G4c | 42/40 | 980201 | 1200 | 739 | 1048 | 425 | 1039 | 100 | 41 | 52 | | | | | | | |
| 600 | WindWorld | 303 | Kastlösa Väst V13,Kastlösa | G4c | 42/40 | 980201 | 1210 | 759 | 1034 | 472 | 1068 | 100 | 38 | 50 | | | | | | | |
| 600 | WindWorld | 297 | Kastlösa Väst V5,Kastlösa | G4c | 42/40 | 980201 | 1300 | 465 | 1079 | 657 | 1384 | 100 | 51 | 49 | | | | | | | |
| 600 | WindWorld | 302 | Kastlösa Väst V10,Kastlösa | G4c | 42/40 | 980201 | 1230 | 916 | 1001 | 544 | 1160 | 100 | 47 | 54 | | | | | | | |
| 600 | WindWorld | 301 | Kastlösa Väst V9,Kastlösa | G4c | 42/40 | 980201 | 1220 | 819 | 1038 | 441 | 976 | 100 | 9 | 10 | | | | | | | |
| 600 | WindWorld | 300 | Kastlösa Väst V8,Kastlösa | G4c | 42/40 | 980201 | 1210 | 844 | 1125 | 492 | 1164 | 100 | 41 | 47 | | | | | | | |
| 600 | WindWorld | 298 | Kastlösa Väst V7,Kastlösa | G4c | 42/40 | 980201 | 1250 | 831 | 895 | 447 | 853 | 100 | 48 | 54 | | | | | | | |
| 600 | WindWorld | 296 | Färvind,Kastlösa | G4c | 42/40 | 980201 | 1280 | 1057 | 1233 | | 728 | 100 | | | | | | | | | |
| 600 | WindWorld | 295 | Kastlösa Väst V3,Kastlösa | G4c | 42/40 | 980201 | 1280 | 925 | 1256 | 585 | 1343 | 100 | 48 | 52 | | | | | | | |
| 600 | WindWorld | 299 | Kastlösa Väst V11,Kastlösa | G4c | 42/40 | 980201 | 1300 | 1014 | 1437 | | 852 | 100 | | | | | | | | | |
| 600 | WindWorld | 306 | Kastlösa Väst V16,Kastlösa | G4c | 42/40 | 980201 | 1250 | 902 | 682 | 373 | 785 | 100 | 50 | 53 | | | | | | | |
| 600 | WindWorld | 294 | Kastlösa Väst V2,Kastlösa | G4c | 42/40 | 980201 | 1280 | 1100 | 1221 | 513 | 1176 | 100 | | | | | | | | | |
| 600 | WindWorld | 305 | Kastlösa Väst V15,Kastlösa | G4c | 42/40 | 980201 | 1220 | 774 | 712 | 406 | 791 | 100 | | | | | | | | | |
| 600 | WindWorld | 282 | Lilla Tjärby Gärd,Lilla Tjärby | C4e | 42/50 | 980301 | 1000 | 877 | 1175 | 534 | 1149 | 100 | 41 | 43 | | | | | | | |
| 600 | WindWorld | 286 | Västan Vind,Mellby | C4b | 42/50 | 980301 | 1000 | 692 | 1129 | 524 | 1124 | 100 | 39 | 43 | | | | | | | |
| 600 | WindWorld | 287 | Mellby Östanvind,Mellby | C4b | 42/50 | 980301 | 1000 | 619 | 1153 | 532 | 1122 | 100 | 41 | 44 | | | | | | | |
| 600 | WindWorld | 293 | Björnsgård,Laholm | C4b | 42/50 | 980312 | 1000 | 715 | 857 | 484 | 1034 | 100 | 39 | 40 | | | | | | | |
| 600 | WindWorld | 285 | Ångsholm,Genevad | C4e | 42/50 | 980401 | 950 | 745 | 1125 | 567 | 1163 | 100 | 49 | 46 | | | | | | | |
| 600 | WindWorld | 283 | Dörestorp 1,Hasslöv | C4b | 42/50 | 980401 | 930 | 832 | 1064 | 257 | 843 | 100 | | | | | | | | | |
| 600 | WindWorld | 284 | Ågård,Genevad | C4e | 42/50 | 980403 | 900 | 862 | 1167 | 544 | 1157 | 100 | 42 | 42 | | | | | | | |
| 600 | WindWorld | 307 | LT Klägstorp,Klägstorp | C4b | 42/50 | 980421 | 990 | 734 | 993 | 441 | 946 | 100 | | | | | | | | | |
| 600 | Vestas | 342 | Tegneby,Hästholmen | - | 44/45 | 980421 | 1250 | 1035 | 1355 | 540 | 1389 | 100 | 56 | 54 | | | | | | | |
| 600 | WindWorld | 288 | | | | | | | | | | | | | | | | | | | |

| Ny * | Effekt (kW) | | Fabrikat | Nr | Anläggning Benämning, Ort | Placering Karta | D/H (m) | I drift | Ber MWh | 2006 MWh | 2007 MWh | 2008 MWh | 12mån MWh | 12mån % | Månad MWh | Tid % | Hindertid (tim) | | | | |
|------|-------------|-----|----------|-----------------------------|------------------------------|--------------------|------------|---------|------------|-------------|-------------|-------------|--------------|------------|--------------|----------|-----------------|-----|-----|----|-----|
| | Hög | Låg | | | | | | | | | | | | | | | MS | YNS | OYS | PU | OPS |
| 600 | WindWorld | | 349 | Kövlinge Vind,Kövlinge | - | 42/50 | 981101 | 1000 | 805 | 1111 | 528 | 1097 | 100 | 38 | 41 | | | | | | |
| 600 | Vestas | | 369 | Elise Ruuthsbo,Bjåresjö | D2b | 44/45 | 990120 | 1325 | 923 | 693 | | | 109 | 100 | | | | | | | |
| 600 | Vestas | | 370 | Elinor Ruuthsbo,Bjåresjö | D2b | 44/45 | 990120 | 1325 | 1011 | 813 | | 205 | 100 | | | | | | | | |
| 600 | Enercon | | 419 | Fjälkinge 2,Fjälkinge | E3a | 44/65 | 990912 | 1300 | 975 | 1219 | 561 | 1215 | 100 | 61 | 80 | | | | | | |
| 600 | Enercon | | 418 | Fjälkinge 1,Fjälkinge | E3a | 44/65 | 990913 | 1300 | 910 | 1159 | 540 | 1154 | 100 | 59 | 79 | | | | | | |
| 600 | Enercon | | 397 | Bjälbo, Lennart,Skänninge | F8d | 44/65 | 991001 | 1300 | 1118 | 1450 | 585 | 1470 | 100 | 64 | 81 | | | | | | |
| 600 | Enercon | | 415 | Virke 2,Kävlinge | C2i | 44/65 | 991028 | 1350 | 1299 | 1481 | 680 | 1503 | 100 | 75 | 75 | | | | | | |
| 600 | Enercon | | 414 | Virke 1,Kävlinge | C2i | 44/65 | 991028 | 1350 | 1245 | 1524 | 658 | 1490 | 100 | 76 | 76 | | | | | | |
| 600 | Enercon | | 417 | Skarhult 2,Skarhult | C2i | 44/65 | 991101 | 1350 | 1146 | 1436 | 642 | 1401 | 100 | 66 | 71 | | | | | | |
| 600 | Enercon | | 416 | Skarhult 1,Skarhult | C2i | 44/65 | 991103 | 1350 | 1171 | 1435 | 615 | 1387 | 100 | 73 | 72 | | | | | | |
| 600 | Enercon | | 420 | Tjärby,Laholm | C4e | 44/46 | 991112 | 1200 | 846 | 1097 | 514 | 1084 | 100 | 42 | 71 | | | | | | |
| 600 | Enercon | | 402 | Kyrkeby 3,Hangvar | J7b | 44/65 | 991130 | 1400 | 984 | 1083 | 534 | 1132 | 100 | 58 | 82 | | | | | | |
| 600 | Enercon | | 403 | Kyrkeby 4,Hangvar | J7b | 44/65 | 991130 | 1400 | 1002 | 1127 | 531 | 1169 | 100 | 61 | 86 | | | | | | |
| 600 | Enercon | | 439 | Skörpinge,Ängelholm | C3h | 44/67 | 000213 | 1450 | 1112 | 1388 | 598 | 1334 | 100 | 64 | 73 | | | | | | |
| 600 | Enercon | | 440 | Genevad,Laholm | C4e | 44/67 | 000301 | 1500 | 1047 | 1298 | 577 | 1278 | 100 | 59 | 68 | | | | | | |
| 600 | Enercon | | 437 | Freja Olsång,Olsång | G3d | 44/46 | 000706 | 1250 | 1063 | 1280 | 602 | 1320 | 100 | 78 | 78 | | | | | | |
| 600 | Enercon | | 457 | Kornheddinge Mölla,Kornhe | C2f | 44/65 | 001201 | 1300 | 1254 | 1603 | 706 | 1578 | 100 | 77 | 79 | | | | | | |
| 600 | Enercon | | 454 | Brönneslöv 1,Brönneslöv | C2i | 44/65 | 001201 | 1350 | 1166 | 1481 | 655 | 1445 | 100 | 75 | 75 | | | | | | |
| 600 | Enercon | | 455 | Brönneslöv 2,Brönneslöv | C2i | 44/65 | 001201 | 1350 | 1199 | 1466 | 668 | 1457 | 100 | 79 | 76 | | | | | | |
| 600 | Enercon | | 456 | Ö. Karaby,Ö. Karaby | C2i | 44/65 | 001201 | 1300 | 1448 | 1739 | 750 | 1692 | 100 | 84 | 80 | | | | | | |
| 600 | Enercon | | 459 | Skagsudde,Skagsudde | J19a | 44/65 | 001231 | 1400 | 1725 | 1811 | 711 | 1888 | 100 | 105 | 86 | | | | | | |
| 600 | Enercon | | 472 | Kristinetorp 4,Kristinetorp | D2g | 44/65 | 010201 | 1350 | 1172 | 1518 | 624 | 1425 | 100 | 79 | 78 | | | | | | |
| 600 | Enercon | | 471 | Kristinetorp 3,Kristinetorp | D2g | 44/65 | 010201 | 1350 | 1204 | 1513 | 653 | 1454 | 100 | 78 | 77 | | | | | | |
| 600 | Enercon | | 470 | Kristinetorp 2,Kristinetorp | D2g | 44/65 | 010201 | 1350 | 1122 | 1457 | 626 | 1389 | 100 | 80 | 77 | | | | | | |
| 600 | Enercon | | 469 | Kristinetorp 1,Kristinetorp | D2g | 44/65 | 010201 | 1350 | 1140 | 1434 | 618 | 1361 | 100 | 78 | 78 | | | | | | |
| 600 | Enercon | | 486 | Heden,Heden | C3e | 44/65 | 010401 | 1350 | 1147 | 1445 | 656 | 1418 | 100 | 44 | 68 | | | | | | |
| 600 | Enercon | | 489 | Rynge III,Rynge | D2a | 44/50 | 010601 | 1350 | 1229 | 1505 | 610 | 1419 | 100 | 81 | 79 | | | | | | |
| 600 | Enercon | | 613 | Skarhult 4,Skarhult | C2i | 44/65 | 010901 | 1350 | 1205 | 1510 | 682 | 1489 | 100 | 78 | 74 | | | | | | |
| 600 | Enercon | | 612 | Skarhult 3,Skarhult | C2i | 44/65 | 010901 | 1350 | 1189 | 1460 | 619 | 1388 | 100 | 72 | 74 | | | | | | |
| 600 | Enercon | | 620 | Allmag,Orust | B8a | 44/65 | 011101 | 1250 | 719 | 925 | 314 | 877 | 100 | 42 | 76 | | | | | | |
| 600 | Enercon | | 631 | Balkåkra Vind,Balkåkra | D1h | 44/56 | 020116 | 1500 | 1349 | 1651 | 718 | 1621 | 100 | 86 | 80 | | | | | | |
| 600 | Enercon | | 634 | Vallsås 1,Vallsås | D2b | 44/65 | 020201 | 1350 | 1123 | 1392 | 579 | 1329 | 100 | 72 | 79 | | | | | | |
| 600 | Enercon | | 635 | Vallsås 2,Vallsås | D2b | 44/65 | 020201 | 1350 | 1079 | 1352 | 565 | 1278 | 100 | 71 | 79 | | | | | | |
| 600 | Enercon | | 640 | Skörstorp Krökelimur,Skörst | D7h | 44/65 | 020301 | 1250 | 1026 | 1289 | 578 | 1329 | 100 | 68 | 81 | | | | | | |
| 600 | Enercon | | 641 | Ramsåsa,Ramsåsa | D2b | 44/65 | 020501 | 1350 | 1124 | 1410 | 608 | 1372 | 100 | 69 | 77 | | | | | | |
| 600 | Enercon | | 672 | Möllebacken 1,Nosaby | E3a | 44/65 | 021105 | 1250 | 892 | 1158 | 528 | 1133 | 100 | 57 | 74 | | | | | | |
| 600 | Enercon | | 673 | Möllebacken 2,Nosaby | E3a | 44/65 | 021105 | 1250 | 905 | 1155 | 524 | 1124 | 100 | 55 | 75 | | | | | | |
| 600 | Enercon | | 679 | Köpingsvik,Köpingsvik | H5a | 44/65 | 021212 | 1400 | 1261 | 1502 | 661 | 1470 | 100 | 85 | 87 | | | | | | |
| 600 | Enercon | | 712 | Bast, Rune,Norra Härene | C8f | 44/65 | 030412 | 1150 | 1040 | 1299 | 556 | 1364 | 100 | 66 | 79 | | | | | | |
| 600 | Enercon | | 713 | Bast, Artur,Norra Härene | C8f | 44/65 | 030412 | 1150 | 1055 | 1298 | 568 | 1375 | 100 | 70 | 80 | | | | | | |
| 600 | Enercon | | 754 | Bure 3,Bureå | L22d | 44/65 | 031001 | 1333 | 930 | 937 | 361 | 958 | 100 | 85 | 78 | | | | | | |
| 600 | Enercon | | 752 | Bure 1,Bureå | L22d | 44/65 | 031001 | 1333 | 866 | 796 | 334 | 789 | 100 | 91 | 79 | | | | | | |
| 600 | Enercon | | 753 | Bure 2,Bureå | L22d | 44/65 | 031001 | 1333 | 859 | 910 | 341 | 903 | 100 | 89 | 78 | | | | | | |
| 600 | Enercon | | 745 | Lörby 2, Krok,Lörby | E3b | 44/65 | 031201 | 1270 | 924 | 1157 | 565 | 1183 | 100 | 56 | 68 | | | | | | |
| 600 | Enercon | | 744 | Lörby 1, Toke,Lörby | E3b | 44/65 | 031201 | 1270 | 916 | 1138 | 547 | 1160 | 100 | 55 | 71 | | | | | | |
| 600 | Enercon | | 746 | Susekulla,Susekulla | G3g | 44/65 | 031207 | 1100 | 872 | 1087 | 478 | 1067 | 100 | 61 | 82 | | | | | | |
| 600 | Enercon | | 747 | Nolby,Nolby | A8f | 44/65 | 040101 | 1250 | 1091 | 1347 | 533 | 1379 | 100 | 54 | 80 | | | | | | |
| 600 | Enercon | | 765 | Mälajord,Mälajord | E5f | 44/65 | 040611 | 1030 | 747 | 889 | 384 | 905 | 100 | 51 | 78 | | | | | | |
| 600 | Enercon | | 771 | Valterslund 1,Valterslunds | D2c | 44/65 | 040630 | 1600 | 1559 | 1835 | 768 | 1811 | 100 | 92 | 79 | | | | | | |
| 600 | Enercon | | 772 | Valterslund 2,Valterslunds | D2c | 44/65 | 040702 | 1600 | 1542 | 1882 | 793 | 1868 | 100 | 97 | 77 | | | | | | |
| 600 | 120 Bonus | | 243 | Olsvenne 1,Näs | I5f | 44/50 | 970303 | 1500 | 1213 | 1533 | 675 | 1596 | 98 | 69 | 81 | | | 3 | | | |
| 600 | 120 Bonus | | 262 | Viking Vind,Löddeköpinge 2 | C2h | 44/41 | 971003 | 1040 | 971 | 1216 | 552 | 1197 | 100 | 57 | 72 | | | | | | |
| 600 | 120 Bonus | | 252 | Skårbo 2,Tanumshede | A9f | 44/50 | 971101 | 1170 | 844 | 1015 | 420 | 1065 | 98 | 45 | 85 | | | | | 5 | |
| 600 | 120 Bonus | | 256 | Skårbo 6,Tanumshede | A9f | 44/50 | 971113 | 1170 | 770 | 916 | 366 | 949 | 99 | 36 | 80 | | | | | 4 | |
| 600 | 120 Bonus | | 254 | Skårbo 4,Tanumshede | A9f | 44/50 | 971114 | 1170 | 853 | 919 | 385 | 988 | 92 | 43 | 78 | | | | | 14 | |
| 600 | 120 Bonus | | 255 | Skårbo 5,Tanumshede | A9f | 44/50 | 971114 | 1170 | 893 | 1066 | 440 | 1127 | 98 | 45 | 82 | | | | | 7 | |
| 600 | 120 Bonus | | 253 | Skårbo 3,Tanumshede | A9f | 44/50 | 971114 | 1170 | 874 | 1101 | 417 | 1147 | 97 | 49 | 85 | | | | | 7 | |
| 600 | 120 Bonus | | 251 | Skårbo 1,Tanumshede | A9f | 44/50 | 971118 | 1170 | 893 | 905 | 443 | 969 | 85 | 49 | 85 | | | | | | |
| 600 | 120 Bonus | | 275 | Magnhild af Magnelund,Eld | - | 44/30 | 971201 | 1100 | 903 | 1131 | 511 | 1131 | 100 | 46 | 68 | | | | | | |
| 600 | 120 Bonus | | 274 | Monica af Olseröd,Olseröd | D2i | 44/40 | 971201 | 1160 | 853 | 1047 | 489 | 1062 | 100 | 40 | 68 | | | | | | |
| 600 | 120 Bonus | | 268 | Oskar, Fredriksskans,Gävle | H13e | 44/50 | 971209 | 1050 | 568 | 84 | | | | | | | | | | | |
| 600 | 120 Bonus | | 366 | Gabriel,Torsholmen | B7a | 44/55 | 980401 | 1250 | 1169 | 1325 | 579 | 1414 | 100 | 57 | 78 | | | | | | |
| 600 | 120 Bonus | | 341 | Holmsund Vindkraftstn,Hol | K20e | 44/50 | 980617 | 1100 | 1105 | 1190 | 474 | 1242 | 100 | 79 | 77 | | | | | | |
| 600 | 120 Bonus | | 337 | Anna Slitevind,Mellböda | H5h | 44/45 | 980801 | 1200 | 1033 | 1187 | 552 | 1210 | 100 | 77 | 79 | | | | | | |
| 600 | 120 Bonus | | 336 | Rebecka Slitevind,Mellböda | H5h | 44/45 | 980801 | 1200 | 793 | 1024 | 441 | 1008 | 100 | 68 | 79 | | | | | | |
| 600 | 120 Bonus | | 335 | Susanna,Mellböda | H5h | 44/45 | 980801 | | 1062 | 1228 | 552 | 1236 | 100 | 85 | 79 | | | | | | |
| 600 | 120 Bonus | | 334 | Maria,Mellböda | H5h | 44/45 | 980801 | 1200 | 959 | 1133 | 503 | 1137 | 100 | 77 | 79 | | | | | | |
| 600 | 120 Bonus | | 333 | Eva,Mellböda | H5h | 44/45 | 980801 | 1200 | 902 | 1098 | 381 | 991 | 100 | 71 | 78 | | | | | | |
| 600 | 120 Bonus | | 347 | Rodovålen 2,Rodovålen | E16e | 44/40 | 981007 | 1200 | 1180 | 1225 | 361 | 1201 | 100 | 61 | 71 | | | | | | |
| 600 | 120 Bonus | | 339 | Biegg-ål'mai,Suorva | I28g | 44/40 | 981013 | 1000 | 1644 | 1587 | 595 | 1567 | 95 | 159 | 90 | | | | 3 | | |
| 600 | 120 Bonus | | 378 | Solvik 3,Maglarp | C1h | 44/50 | 990525 | 1500 | 1549 | 1638 | 734 | 1740 | 96 | 85 | 81 | | | | | | |
| 600 | 120 Bonus | | 379 | Solvik 4,Maglarp | C1h | 44/50 | 990526 | 1500 | 1515 | 1815 | 780 | 1812 | 99 | 83 | 80 | | | | | | |
| 600 | 125 Nordex | | 674 | Jung, Jungavind,Jung | C8f | 43/46 | 030109 | | | | | | | | | | | | | | |
| 660 | Vestas | | 313 | Havsvind,Mellbystrand | C4b | 47/50 | 980626 | 1400 | 1052 | 1344 | 587 | 1276 | 100 | 52 | 41 | | | | | | |

| Ny * | Effekt (kW) | | Nr Anläggning | Placering | D/H I drift | Ber MWh | 2006 MWh | 2007 MWh | 2008 MWh | 12mån MWh | 12mån % | Månad MWh | Tid % | Hindertid (tim) | | | | | | | |
|------|-------------|-----------|---------------|-----------------------------|-------------|---------|----------|----------|----------|-----------|---------|-----------|-------|-----------------|-------|----|-----|-----|----|-----|----|
| | Hög | Låg | | | | | | | | | | | | Benämning, Ort | Karta | MS | YNS | OYS | PU | OPS | TF |
| 660 | Vestas | | 406 | Storugns 2,Lärbro | J7b | 47/55 | 991215 | 1551 | 1050 | 1249 | 580 | 1291 | 99 | 63 | 58 | 2 | | | | | |
| 660 | Vestas | | 405 | Storugns 1,Lärbro | J7b | 47/47 | 991217 | 1534 | 1010 | 1182 | 584 | 1254 | 99 | 60 | 57 | | | | | | |
| 660 | Vestas | | 407 | Storugns 3,Lärbro | J7b | 47/55 | 991218 | 1530 | 1075 | 1249 | 615 | 1329 | 97 | 64 | 59 | | | | | | |
| 660 | Vestas | | 408 | Storugns 4,Lärbro | J7b | 47/55 | 991218 | 1528 | 1082 | 1237 | 602 | 1305 | 99 | 64 | 58 | 1 | | | | | |
| 660 | Vestas | | 409 | Storugns 5,Lärbro | J7e | 47/55 | 991219 | 1534 | 1114 | 1267 | 624 | 1361 | 97 | 67 | 60 | | | | | | |
| 660 | Vestas | | 410 | Storugns 6,Lärbro | J7b | 47/55 | 991220 | 1576 | 988 | 1167 | 551 | 1214 | 99 | 59 | 56 | | | | | | |
| 660 | Vestas | | 425 | Nordmaling Järnasklubb,Jä | J19i | 47/55 | 991221 | 1410 | 855 | | | | | | | | | | | | |
| 660 | Vestas | | 436 | Månsagården,Uvered | - | 47/50 | 000105 | 1100 | 863 | 1046 | 197 | 776 | 100 | 58 | 48 | | | | | | |
| 660 | Vestas | | 432 | Eveboda II,Eveboda | E8c | 47/55 | 000508 | 1425 | 1131 | 1442 | 616 | 1493 | 100 | 62 | 49 | | | | | | |
| 660 | Vestas | | 431 | Eveboda I,Eveboda | E8c | 47/55 | 000508 | 1425 | 1094 | 1360 | 603 | 1415 | 100 | 59 | 49 | | | | | | |
| 660 | Vestas | | 433 | Eveboda III,Eveboda | E8c | 47/55 | 000508 | 1425 | 1132 | 1384 | 562 | 1366 | 100 | 62 | 50 | | | | | | |
| 660 | Vestas | | 434 | Skäggs 1,Väske | J6g | 47/50 | 000705 | 1510 | 1007 | 1166 | 520 | 1172 | 94 | 55 | 73 | | | | 54 | | |
| 660 | Vestas | | 435 | Skäggs 3,Väske | J6g | 47/50 | 000705 | 1510 | 1060 | 1228 | 562 | 1277 | 98 | 67 | 79 | 3 | | | | | |
| 660 | Vestas | | 446 | Gunnön 3,Karlshamn | E3f | 47/55 | 000908 | 1600 | 862 | 1211 | 603 | 1259 | 99 | 66 | 43 | | | | | | 7 |
| 660 | Vestas | | 444 | Gunnön 1,Karlshamn | E3f | 47/55 | 000908 | 1600 | 882 | 1160 | 571 | 1197 | 99 | 60 | 43 | | | | | | 7 |
| 660 | Vestas | | 445 | Gunnön 2,Karlshamn | E3f | 47/55 | 000908 | 1600 | 893 | 1042 | 517 | 1031 | 86 | 59 | 48 | | | | | | 7 |
| 660 | Vestas | | 447 | Ruth, Ingelstorp,Ingelstorp | C3e | 47/55 | 000914 | 1350 | 1126 | 1286 | 649 | 1279 | 100 | 69 | 63 | | | | | | 7 |
| 660 | Vestas | | 458 | Helan,Hovby | D3c | 47/45 | 001124 | 1150 | 789 | 1041 | 496 | 1022 | 100 | 49 | 62 | | | | | | 14 |
| 660 | Vestas | | 448 | Nordanstigsv.1,Stocka | H16b | 47/55 | 001206 | 1333 | 666 | 747 | 293 | 765 | 100 | 44 | 40 | | | | | | 1 |
| 660 | Vestas | | 453 | Nordanstigsv. 4,Stocka | H16b | 47/55 | 001206 | 1386 | 764 | 726 | 323 | 791 | 100 | 45 | 42 | | | | | | |
| 660 | Vestas | | 450 | Nordanstigsv.3,Stocka | H16b | 47/55 | 001206 | 1300 | 660 | 731 | 292 | 747 | 100 | 36 | 38 | | | | | | |
| 660 | Vestas | | 449 | Nordanstigsv.2,Stocka | H16b | 47/55 | 001206 | 1327 | 651 | 712 | 292 | 737 | 100 | 39 | 39 | | | | | | |
| 660 | Vestas | | 465 | Ö-vik Fanbyn, Fredrika,Hus | J19e | 47/55 | 001229 | 1525 | 1168 | 1358 | 466 | 1336 | 91 | 82 | 53 | | | | | | 7 |
| 660 | Vestas | | 466 | Ö-vik Fanbyn, Gertrud,Hus | J19e | 47/55 | 001229 | 1534 | 1249 | 1336 | 558 | 1420 | 91 | 84 | 50 | | | | | | 7 |
| 660 | Vestas | | 467 | Ö-vik Fanbyn, Herta,Husum | J19e | 47/55 | 001229 | 1601 | 1337 | 1477 | 624 | 1573 | 92 | 95 | 54 | | | | | | 10 |
| 660 | Vestas | | 464 | Ö-vik Sjalnön, Ely,Husum | J19e | 47/55 | 001229 | 1534 | 1117 | 1244 | 525 | 1343 | 94 | 79 | 49 | | | | | | 10 |
| 660 | Vestas | | 463 | Ö-vik Fanbyn, Dagny,Husu | J19e | 47/55 | 001229 | 1495 | 1150 | 1325 | 570 | 1449 | 94 | 92 | 52 | | | | | | |
| 660 | Vestas | | 462 | Ö-vik Fanbyn, Camilla,Hus | J19e | 47/55 | 001229 | 1523 | 1159 | 1273 | 543 | 1358 | 94 | 88 | 50 | | | | | | 7 |
| 660 | Vestas | | 461 | Ö-vik Fanbyn, Beda,Husum | J19e | 47/55 | 001229 | 1540 | 1265 | 1396 | 574 | 1476 | 93 | 93 | 53 | | | | | | |
| 660 | Vestas | | 460 | Ö-vik Sjalnön, Ada,Husum | J19e | 47/55 | 001229 | 1534 | 1000 | 1269 | 496 | 1328 | 92 | 78 | 39 | | | | | | 14 |
| 660 | Vestas | | 473 | Täppeshusen 3,Höganäs | C3d | 47/50 | 010110 | 1500 | 701 | 790 | 390 | 1181 | 100 | 97 | 65 | | | | | | |
| 660 | Vestas | | 478 | Måsinge 1,Båstad | C4a | 47/40 | 010401 | 1600 | 1201 | 1470 | 685 | 1474 | 100 | 77 | 70 | | | | | | |
| 660 | 200 | Vestas | 329 | Ventosum 7,Falkenberg | B5f | 47/60 | 980901 | 1250 | 1044 | 746 | 613 | 870 | 100 | 52 | 62 | | | | | | |
| 660 | 200 | Vestas | 330 | Ventosum 8,Falkenberg | B5f | 47/60 | 980901 | 1250 | 1053 | 1185 | 626 | 1312 | 100 | 53 | 62 | | | | | | |
| 660 | 200 | Vestas | 331 | Ventosum 9,Falkenberg | B5f | 47/60 | 980901 | 1250 | 1080 | 1212 | 0 | 650 | 100 | | | | | | | | |
| 660 | 200 | Vestas | 332 | Ventosum 10,Falkenberg | B5f | 47/60 | 980901 | 1250 | 1115 | 1253 | 287 | 950 | 100 | 53 | 47 | | | | | | |
| 660 | 200 | Vestas | 323 | Ventosum 1,Falkenberg | B5f | 47/60 | 980917 | 1250 | 1154 | 1372 | 650 | 1441 | 100 | 53 | 63 | | | | | | |
| 660 | 200 | Vestas | 324 | Ventosum 2,Falkenberg | B5f | 47/60 | 980917 | 1250 | 996 | 1099 | 654 | 1433 | 100 | 52 | 64 | | | | | | |
| 660 | 200 | Vestas | 325 | Ventosum 3,Falkenberg | B5f | 47/60 | 980917 | 1250 | 1124 | 1279 | 312 | 1014 | 100 | 46 | 41 | | | | | | |
| 660 | 200 | Vestas | 326 | Ventosum 4,Falkenberg | B5f | 47/60 | 980918 | 1250 | 1152 | 1289 | | 696 | 100 | | | | | | | | |
| 660 | 200 | Vestas | 328 | Ventosum 6,Falkenberg | B5f | 47/60 | 980921 | 1250 | 1047 | 1102 | 342 | 997 | 100 | 56 | 42 | | | | | | |
| 660 | 200 | Vestas | 327 | Ventosum 5,Falkenberg | B5f | 47/60 | 980921 | 1250 | 1128 | 1218 | 676 | 1338 | 100 | 55 | 65 | | | | | | |
| 660 | 200 | Vestas | 353 | Värövind Värö III,Värö | B6b | 47/55 | 981112 | 1400 | 1158 | 1330 | 646 | 1440 | 100 | 59 | 66 | | | | | | |
| 660 | 200 | Vestas | 351 | Värövind Värö I,Värö | B6b | 47/55 | 981112 | 1400 | 1081 | 1302 | 621 | 1391 | 100 | 55 | 67 | | | | | | |
| 660 | 200 | Vestas | 352 | Värövind Värö II,Värö | B6b | 47/55 | 981112 | 1400 | 1119 | 1284 | 584 | 1345 | 100 | 16 | 28 | | | | | | |
| 660 | 200 | Vestas | 371 | Sam Öckeröwind,Pinan | - | 47/50 | 990110 | 1700 | 1406 | 1835 | 751 | 1856 | 100 | 84 | 81 | | | | | | |
| 660 | 200 | Vestas | 374 | Skåls 1,Näs | I5f | 47/45 | 990506 | 1700 | 1343 | 1764 | 798 | 1859 | 99 | 79 | 74 | | | | 6 | | |
| 660 | 200 | Vestas | 376 | Slitevind XIX,Näs | I5f | 47/45 | 990507 | 1850 | 1631 | 1915 | 887 | 2036 | 98 | 86 | 78 | | | | 2 | | 4 |
| 660 | 200 | Vestas | 377 | Tjelvar Bursvind,Näs | I5f | 47/45 | 990507 | 1700 | 1566 | 1622 | 760 | 1671 | 87 | 82 | 77 | | | | | | |
| 660 | 200 | Vestas | 429 | Slättäng 2,Slättäng | C2i | 47/55 | 991001 | 1500 | 1244 | 1483 | 666 | 1465 | 100 | 74 | 68 | | | | | | |
| 660 | 200 | Vestas | 398 | Ranåker,Skara | D8d | 47/65 | 991006 | 1000 | 867 | 1000 | 415 | 987 | 100 | 49 | 70 | | | | | | |
| 660 | 200 | Vestas | 426 | Halvan,Hovby | D3c | 47/45 | 991230 | 1150 | 799 | 930 | 486 | 900 | 100 | 52 | 63 | | | | | | |
| 660 | 200 | Vestas | 441 | Levide 1,Näs | I5f | 47/45 | 001007 | 1600 | 1331 | 1692 | 731 | 1734 | 99 | 78 | 77 | | | | | | |
| 660 | 200 | Vestas | 443 | Levide 3,Näs | I5f | 47/45 | 001007 | 1600 | 1286 | 1607 | 731 | 1666 | 99 | 73 | 60 | | | | | | |
| 660 | 200 | Vestas | 442 | Levide 2,Näs | I5f | 47/45 | 001008 | 1600 | 1324 | 1649 | 739 | 1720 | 99 | 76 | 74 | | | | | | 20 |
| 660 | 200 | Vestas | 627 | Brönnestad 2,Brönnestad, | C1i | 47/40 | 010406 | 1585 | 1257 | 1662 | 653 | 1550 | 100 | 84 | 71 | | | | | | |
| 660 | 200 | Vestas | 628 | Eksbo,Hönsinge | C1i | 47/40 | 010406 | 1590 | 1197 | 1423 | 688 | 1596 | 100 | 87 | 69 | | | | | | |
| 660 | 200 | Vestas | 626 | Brönnestad 1,Brönnestad, | C1i | 47/40 | 010406 | 1585 | 1336 | 1687 | 665 | 1574 | 100 | 80 | 69 | | | | | | |
| 660 | 200 | Neg Micon | 490 | Västanby I,Lund | C2h | 48/55 | 010601 | 1680 | 1628 | 1840 | 721 | 1710 | 100 | 90 | 78 | | | | | | |
| 660 | 200 | Neg Micon | 491 | Västanby II,Lund | C2h | 48/55 | 010601 | 1680 | 1609 | 1646 | 700 | 1617 | 100 | 86 | 77 | | | | | | |
| 660 | 200 | Neg Micon | 696 | Bjåresjö 2,Bjåresjö | D2b | 48/55 | 020101 | 1600 | 1345 | 1760 | 749 | 1711 | 100 | 89 | 77 | | | | | | |
| 660 | 200 | Neg Micon | 695 | Bjåresjö 1,Bjåresjö | D2b | 48/55 | 020101 | 1600 | 1457 | 1775 | 762 | 1723 | 100 | 87 | 76 | | | | | | |
| 660 | 200 | Vestas | 639 | Hovby, Chaplin,Hovby | D3c | 47/45 | 020131 | 1150 | 875 | 1054 | 517 | 1045 | 100 | 52 | 63 | | | | | | |
| 660 | 200 | Vestas | 660 | Agri II,Näs | I5f | 47/ | 021126 | 1905 | 1796 | 2166 | 937 | 2278 | 99 | 93 | 78 | | | | | | |
| 750 | 175 | NEG Micon | 348 | Rodovålen 3,Rodovålen | E16e | 44/50 | 981023 | 1200 | 1260 | 1216 | 321 | 1158 | 100 | 60 | 60 | | | | | | |
| 750 | 200 | NEG Micon | 310 | Gislöv 2,Gislöv | C1i | 44/50 | 980417 | 1600 | 1496 | 1856 | 575 | 1584 | 100 | 95 | | | | | | | |
| 750 | 200 | NEG Micon | 360 | Vanstad Kommungård,Sjöb | D2e | 48/55 | 981104 | 1370 | 1300 | 1631 | 692 | 1559 | 100 | 83 | 78 | | | | | | |
| 750 | 200 | NEG Micon | 373 | Ångalid,Torrlösa | C3b | 48/55 | 990115 | 1470 | 1432 | 1751 | 761 | 1685 | 100 | 88 | 76 | | | | | | |
| 750 | 200 | NEG Micon | 392 | Solvik Nr 7,Maglarp | C1h | 48/50 | 990625 | 2140 | 1943 | 2348 | 343 | 1719 | 100 | | | | | | | | |
| 750 | 200 | NEG Micon | 391 | Solvik Nr 6,Maglarp | C1h | 48/50 | 990628 | 2140 | 1986 | 2086 | 344 | 1438 | 100 | | | | | | | | |
| 750 | 200 | NEG Micon | 390 | Solvik Nr 5,Maglarp | C1h | 48/50 | 990630 | 2140 | 2035 | 2385 | 346 | 1717 | 100 | | | | | | | | |
| 750 | 200 | WindWorld | 404 | Otterbäckens Vind 1,Otterb | D9i | 52/65 | 990717 | 1700 | 1097 | 1311 | 439 | 1230 | 100 | 61 | | | | | | | |
| 750 | 200 | NEG Micon | 399 | Framnäs 1,Nöbbelev | C2i | 48/55 | 990923 | 1362 | 1649 | 748 | 1656 | 100 | 83 | 76 | | | | | | | |
| 750 | 200 | NEG Micon | 452 | Sivik III,Lysekil | A8f | 48/55 | 000101 | 1600 | 1142 | | | | | | | | | | | | |

| Ny * | Effekt (kW) | | Fabrikat | Nr | Anläggning | Placering | D/H | I drift | Ber | 2006 | 2007 | 2008 | 12mån | 12mån | Månad | Tid | Hindertid (tim) | | | | |
|------|-------------|-----|------------------------------|------|------------|-----------|------|---------|------|------|------|------|-------|-------|-------|-----|-----------------|-----|-------|-----|-----|
| | Hög | Låg | | | | | | | | | | | | | | | Benämning, | Ort | Karta | (m) | MWh |
| 800 | Enercon | 806 | Windy,Vårsås | E8d | 48/76 | 050919 | 1400 | 1029 | 1368 | 653 | 1492 | 100 | 69 | 78 | | | | | | | |
| 800 | Enercon | 826 | Skallmeja Väster,Skallmeja | C8f | 48/76 | 051013 | 1700 | 1546 | 1949 | 836 | 2037 | 100 | 103 | 83 | | | | | | | |
| 800 | Enercon | 817 | Hangelösa 1,Hangelösa | D8g | 48/76 | 051015 | 1527 | 1390 | 1798 | 748 | 1863 | 100 | 86 | 84 | | | | | | | |
| 800 | Enercon | 818 | Stenökra, Lilla Lunden,Lilla | D8g | 48/76 | 051015 | 1500 | 1292 | 1589 | 677 | 1643 | 100 | 84 | 86 | | | | | | | |
| 800 | Enercon | 827 | Helleberg 1,Helleberg | C8f | 48/50 | 051027 | 1400 | 1153 | 1543 | 694 | 1627 | 100 | 81 | 83 | | | | | | | |
| 800 | Enercon | 819 | Skeby 3,Broby | D8g | 48/76 | 051028 | 1500 | 1384 | 1796 | 761 | 1877 | 100 | 88 | 82 | | | | | | | |
| 800 | Enercon | 838 | Beateberg 1,Knislinge | D3f | 48/65 | 051223 | 1150 | 757 | 1021 | 535 | 1059 | 100 | 45 | 66 | | | | | | | |
| 800 | Enercon | 839 | Hattefjäll,Hällevadsholm | B9a | 48/76 | 060220 | 1585 | 1371 | 2092 | 853 | 2164 | 100 | 109 | 93 | | | | | | | |
| 800 | Enercon | 828 | Klevberget Hällevadsholm, | A9c | 48/76 | 060220 | 1800 | 1282 | 1951 | 812 | 2036 | 100 | 103 | 91 | | | | | | | |
| 800 | Enercon | 837 | Naglarp 1,Kinnarp | D7g | 48/76 | 060323 | 1622 | 905 | 1569 | 688 | 1614 | 100 | 77 | 82 | | | | | | | |
| 800 | Enercon | 836 | Askers Via,Odensbacken | F10b | 48/76 | 060401 | 1400 | 925 | 1546 | 656 | 1600 | 100 | 74 | 86 | | | | | | | |
| 800 | Enercon | 841 | Kalmarsund Vind,Degerha | G3i | 48/50 | 060719 | 2000 | 1081 | 2473 | 989 | 2491 | 100 | 120 | 87 | | | | | | | |
| 800 | Enercon | 849 | Hällingarna, iDA,Ollebacke | F20a | 48/74 | 060915 | 2000 | 499 | 1969 | 667 | 1888 | 100 | 105 | 87 | | | | | | | |
| 800 | Enercon | 852 | Kvismaren 2,Odensbacken | F10c | 48/76 | 061101 | 1420 | 343 | 1404 | 599 | 1460 | 100 | 60 | 84 | | | | | | | |
| 800 | Enercon | 854 | Bränna,Skänning | F8d | 48/76 | 070101 | 1550 | | 1495 | 697 | 1687 | 100 | 78 | 85 | | | | | | | |
| 800 | Enercon | 865 | Torseröds Vindkraftpark 6,T | A9f | 48/55 | 070131 | 1550 | | 1105 | 584 | 1437 | 100 | 67 | 90 | | | | | | | |
| 800 | Enercon | 862 | Torseröds Vindkraftpark 3,T | A9f | 48/55 | 070131 | 1550 | | 1255 | 590 | 1497 | 100 | 72 | 91 | | | | | | | |
| 800 | Enercon | 863 | Torseröds Vindkraftpark 4,T | A9f | 48/55 | 070131 | 1550 | | 1099 | 591 | 1475 | 100 | 65 | 91 | | | | | | | |
| 800 | Enercon | 864 | Torseröds Vindkraftpark 5,T | A9f | 48/55 | 070131 | 1550 | | 1228 | 585 | 1520 | 100 | 74 | 91 | | | | | | | |
| 800 | Enercon | 860 | Torseröds Vindkraftpark 1,T | A9f | 48/55 | 070131 | 1550 | | 1487 | 755 | 1843 | 100 | 88 | 93 | | | | | | | |
| 800 | Enercon | 861 | Torseröds Vindkraftpark 2,T | A9f | 48/55 | 070131 | 1550 | | 941 | 610 | 1395 | 100 | 67 | 91 | | | | | | | |
| 800 | Enercon | 866 | Kvarnen vindkraft,Kvarnen | D8g | 53/73 | 070505 | 1500 | | 989 | 780 | 1769 | 100 | 96 | 84 | | | | | | | |
| 800 | Enercon | 873 | Härjevads Vind,Härjevad | C8f | 53/75 | 070525 | 1700 | | 1128 | 901 | 2030 | 100 | 113 | 87 | | | | | | | |
| 800 | Enercon | 874 | Gömta Vind,Gömta | D8e | 53/75 | 070601 | 1500 | | 809 | 669 | 1478 | 100 | 84 | 84 | | | | | | | |
| 800 | Enercon | 877 | Rangeltorp 1,Rangeltorp | C8c | 53/75 | 070614 | 1430 | | 747 | 706 | 1453 | 100 | 87 | 84 | | | | | | | |
| 800 | Enercon | 875 | Elin 1,Göteve Liden 2 | D7g | 53/75 | 070628 | 1800 | | 857 | 787 | 1644 | 100 | 91 | 83 | | | | | | | |
| 800 | Enercon | 886 | Lovene,Källands Åsaka | C8f | 53/73 | 070801 | 1800 | | 807 | 819 | 1626 | 100 | 102 | 86 | | | | | | | |
| 800 | Enercon | 876 | Söderbodane 1,Söderboda | C9g | 53/73 | 070830 | 1500 | | 487 | 673 | 1159 | 100 | 80 | 89 | | | | | | | |
| 800 | Enercon | 883 | Hackegården 1,Mjölby | F8d | 48/63 | 070912 | 1800 | | 347 | 644 | 991 | 100 | 64 | 82 | | | | | | | |
| 800 | Enercon | 884 | Hackegården 2,Mjölby | F8d | 48/63 | 070921 | 1800 | | 354 | 647 | 1001 | 100 | 77 | 82 | | | | | | | |
| 800 | Enercon | 887 | Torkelsrud,Valbo Ryr | B8h | 53/73 | 071017 | 1800 | | 266 | 678 | 943 | 100 | 86 | 91 | | | | | | | |
| 800 | Enercon | 975 | Carpe Ventum 1,Torp | C9a | 53/78 | 071101 | 1800 | | 434 | 683 | 1117 | 100 | 85 | 83 | | | | | | | |
| 800 | Enercon | 955 | Åsen Tumleberg 1,Åsen | C8b | 53/73 | 071123 | 1600 | | 193 | 704 | 897 | 100 | 85 | 87 | | | | | | | |
| 800 | Enercon | 954 | Askegården,Skänninge | F8d | 53/73 | 071211 | 1600 | | | 737 | 737 | 100 | 78 | 83 | | | | | | | |
| 800 | Enercon | 963 | Borringe 1,Borensberg | F8e | 53/75 | 071218 | 1750 | | | 726 | 726 | 100 | 89 | 86 | | | | | | | |
| 800 | Enercon | 964 | Fingal af Boberg,Borensber | F8e | 53/75 | 071218 | 1750 | | | 708 | 708 | 100 | 87 | 86 | | | | | | | |
| 800 | Enercon | 965 | Boberg 1,Borensberg | F8e | 53/75 | 071218 | 1750 | | | 735 | 735 | 100 | 87 | 86 | | | | | | | |
| 800 | Enercon | 976 | Götene Elin 2,Götene | D7g | 53/73 | 080308 | 1800 | | | 102 | 102 | 100 | 102 | 85 | | | | | | | |
| 850 | Vestas | 468 | Lanna 1, Lidköping,Lanna | C8f | 52/49 | 001228 | 1350 | 1351 | 1673 | 738 | 1766 | 100 | 91 | 75 | | | | | | | |
| 850 | Vestas | 487 | Roxett,Näsby | F8f | 52/55 | 010116 | 1470 | 898 | 1187 | 493 | 1175 | 100 | 57 | 62 | | | | | | | |
| 850 | Vestas | 719 | Grimskullen,Grimskullen M | D7g | 52/65 | 010405 | 1800 | 1359 | 1650 | 738 | 1722 | 100 | 90 | 65 | | | | | | | |
| 850 | Vestas | 600 | Millingstorp I, Millingstorp | E8c | 52/65 | 010524 | 1870 | 1407 | 1531 | 735 | 1807 | 100 | 80 | 69 | | | | | | | |
| 850 | Vestas | 488 | Skog 1,Söne | C8i | 52/65 | 010601 | 1870 | 1501 | 1882 | 802 | 1980 | 100 | 93 | 78 | | | | | | | |
| 850 | Vestas | 601 | Runnestad I,Runnestad | E8c | 52/65 | 010803 | 1915 | 1544 | 1933 | 795 | 1973 | 100 | 79 | 73 | | | | | | | |
| 850 | Vestas | 615 | Bränneberg 2,Jung | C8f | 52/49 | 010825 | 1400 | 1290 | 1601 | 698 | 1692 | 100 | 85 | 72 | | | | | | | |
| 850 | Vestas | 614 | Bränneberg 1,Jung | C8f | 52/49 | 010825 | 1400 | 1241 | 1509 | 703 | 1644 | 100 | 86 | 73 | | | | | | | |
| 850 | Vestas | 603 | Ö-vik Inger,Norrvåge | J19a | 52/55 | 010827 | 2160 | 1186 | 1394 | 400 | 1299 | 99 | 61 | 55 | 2 | | | | | | |
| 850 | Vestas | 602 | Högby I,Högby | F8d | 52/65 | 010906 | 1660 | 1203 | 1550 | 638 | 1578 | 100 | 153 | 85 | | | | | | | |
| 850 | Vestas | 604 | Ö-vik Gun,Norrvåge | J19a | 52/55 | 010928 | 2160 | 1263 | 1324 | 415 | 1235 | 98 | 74 | 57 | 2 | | | | | | |
| 850 | Vestas | 632 | Spargodt,Tågarp | C3b | 52/65 | 011108 | 1850 | 1815 | 2139 | 978 | 2132 | 100 | 104 | 72 | | | | | | | |
| 850 | Vestas | 621 | Råby 2,Ödeshög | E8b | 52/55 | 011201 | 1935 | 1557 | 1942 | 845 | 1987 | 100 | 90 | 67 | | | | | | | |
| 850 | Vestas | 625 | Herrgårdsvind,Hogstad | F8d | 52/65 | 020110 | 1705 | 1467 | 1780 | 739 | 1792 | 100 | 79 | 71 | | | | | | | |
| 850 | Vestas | 622 | Vitåkra,Everöd Brogård | D2c | 52/55 | 020115 | 1950 | 1539 | 1942 | 844 | 1876 | 100 | 101 | 63 | | | | | | | |
| 850 | Vestas | 624 | Kampa 1,Kampagården Sm | D7h | 52/65 | 020128 | 1765 | 1382 | 1724 | 720 | 1738 | 100 | 82 | 73 | | | | | | | |
| 850 | Vestas | 633 | Ingrid Ylva Bjälbo,Bjälbo | F8d | 52/74 | 020202 | 1900 | 1722 | 2113 | 858 | 2136 | 100 | 95 | 75 | | | | | | | |
| 850 | Vestas | 623 | Skog 2,Söne | C8i | 52/74 | 020204 | 2000 | 1643 | 2041 | 860 | 2131 | 100 | 99 | 71 | | | | | | | |
| 850 | Vestas | 629 | Hill Mill,Rök | E8c | 52/65 | 020218 | 1850 | 1410 | 1794 | 749 | 1828 | 100 | 77 | 63 | | | | | | | |
| 850 | Vestas | 630 | Bärstad,Borghamn | E8f | 52/55 | 020222 | 2030 | 1622 | 2108 | 625 | 1906 | 100 | 85 | 69 | | | | | | | |
| 850 | Vestas | 636 | Häckenäs III,Borghamn | E8f | 52/50 | 020226 | 1955 | 1684 | 2202 | 859 | 2204 | 100 | 86 | 72 | | | | | | | |
| 850 | Vestas | 638 | Långben, Långlöt,Långlöt | H4g | 52/65 | 020314 | 1500 | 1464 | 1753 | 759 | 1759 | 100 | 111 | 84 | | | | | | | |
| 850 | Vestas | 648 | Kärragården,Bjåresjö | D2b | 52/55 | 020913 | 1800 | 1615 | 1803 | 870 | 1818 | 100 | 104 | 69 | | | | | | | |
| 850 | Vestas | 649 | Kärragården K4R,Bjåresjö | D2b | 52/55 | 020913 | 1800 | 1545 | 1802 | 837 | 1941 | 100 | 111 | 66 | | | | | | | |
| 850 | Vestas | 671 | Skeby 1,Källby | D8g | 52/49 | 021002 | 1300 | 938 | 1202 | 525 | 1244 | 100 | 60 | 65 | | | | | | | |
| 850 | Vestas | 650 | Hovgården I,Hov | E8f | 52/55 | 021004 | 1750 | 1466 | 1674 | 775 | 1874 | 100 | 85 | 63 | | | | | | | |
| 850 | Vestas | 669 | Runnestad III,Runnestad | E8c | 52/65 | 021017 | 1850 | 1453 | 1313 | 778 | 1383 | 70 | 82 | 76 | | | | | | | |
| 850 | Vestas | 668 | Runnestad II,Runnestad | E8c | 52/65 | 021023 | 1850 | 1498 | 1876 | 777 | 1933 | 100 | 80 | 89 | | | | | | | |
| 850 | Vestas | 657 | Kulle 9 Havdhem,Havdhem | I5i | 52/55 | 021029 | 1730 | 1548 | 1803 | 786 | 1887 | 98 | 89 | 60 | | | | | | | |
| 850 | Vestas | 651 | Kulle 3 Havdhem,Havdhem | I5i | 52/55 | 021029 | 1800 | 1476 | 1763 | 740 | 1821 | 99 | 94 | 81 | | | | | | | |
| 850 | Vestas | 652 | Kulle 4 Havdhem,Havdhem | I5i | 52/55 | 021029 | 1740 | 1484 | 1763 | 748 | 1810 | 99 | 85 | 78 | | | | | | | |
| 850 | Vestas | 653 | Kulle 5 Havdhem,Havdhem | I5i | 52/55 | 021029 | 1700 | 1503 | 1798 | 763 | 1844 | 98 | 93 | 73 | 61 | | | | | | |
| 850 | Vestas | 654 | Kulle 6 Havdhem,Havdhem | I5i | 52/55 | 021029 | 1720 | 1478 | 1743 | 759 | 1810 | 98 | 86 | 79 | 4 | | | | | | |
| 850 | Vestas | 656 | Kulle 8 Havdhem,Havdhem | I5i | 52/55 | 021029 | 1730 | 1516 | 1769 | 745 | 1826 | 98 | 98 | 81 | | | | | | | |
| 850 | Vestas | 658 | Kulle 10 Näs,Näs | I5i | 52/55 | 021029 | 1760 | 1587 | 1838 | 800 | 1920 | 97 | 95 | 78 | | | | | | | 27 |
| 850 | Vestas | 659 | Kulle 11 Näs,Havdhem | I5i | 52/55 | 021029 | 1820 | 1524 | 1772 | 467 | 1569 | 87 | 87 | 80 | | | | | | | |
| 850 | Vestas | 655 | Kulle 7 Havdhem,Havdhem | I5i | 52/55 | | | | | | | | | | | | | | | | |

| Ny * | Effekt (kW) | | Fabrikat | Nr | Anläggning Benämning, Ort | Placering Karta | D/H (m) | I drift | Ber MWh | 2006 MWh | 2007 MWh | 2008 MWh | 12mån MWh | 12mån % | Månad MWh | Tid % | Hindertid (tim) | | | | |
|------|-------------|-----------|------------------------------|----------------------------|------------------------------|--------------------|------------|---------|------------|-------------|-------------|-------------|--------------|------------|--------------|----------|-----------------|-----|-----|----|-----|
| | Hög | Låg | | | | | | | | | | | | | | | MS | YNS | OYS | PU | OPS |
| 850 | Vestas | 708 | Uvereds Vindkraftfför. V2,Uv | C8f | 52/50 | 030615 | 1250 | 1122 | 1328 | 660 | 1420 | 100 | 77 | 65 | | | | | | | |
| 850 | Vestas | 711 | Uvereds Vindkraftfför. V5,Uv | a-95h | 52/50 | 030615 | 1250 | 1168 | 1499 | 699 | 1606 | 100 | 80 | 66 | | | | | | | |
| 850 | Vestas | 707 | Uvereds Vindkraftfför. V1,Uv | C8f | 52/50 | 030615 | 1250 | 1231 | 1476 | 698 | 1627 | 100 | 82 | 65 | | | | | | | |
| 850 | Vestas | 724 | Grebban 3, Tanumshede,T | A9f | 52/50 | 030706 | 1600 | 1440 | 1571 | 696 | 1765 | 100 | 78 | 77 | | | | | | | |
| 850 | Vestas | 720 | Stora Lund,Stora Lund | D8g | 52/74 | 030714 | 1500 | 1330 | 1393 | 590 | 1586 | 100 | | | | | | | | | |
| 850 | Vestas | 722 | Frittorp,Sparlösa Frittorp | C8e | 52/74 | 030714 | 1700 | 1485 | 1850 | 729 | 1888 | 100 | 92 | 69 | | | | | | | |
| 850 | Vestas | 721 | Skeby 2,Källby | D8g | 52/49 | 030723 | 1200 | 1023 | 1324 | 574 | 1380 | 100 | 67 | 58 | | | | | | | |
| 850 | Vestas | 749 | Sparlösa,Sparlösa | C8e | 52/65 | 030901 | 1650 | 1406 | 1699 | 726 | 1758 | 100 | 87 | 72 | | | | | | | |
| 850 | Vestas | 723 | Erikstorp 2,Lundsbrunn | D8h | 52/74 | 031024 | | 1181 | 1353 | 534 | 1310 | 100 | 53 | 53 | | | | | | | |
| 850 | Vestas | 731 | Elvinda, Rocklunda,Rocklu | F8g | 52/65 | 031103 | 1600 | 1441 | 1808 | 711 | 1796 | 100 | 82 | 68 | | | | | | | |
| 850 | Vestas | 727 | Valla Vind,Rök | E8c | 52/65 | 031107 | 1700 | 1441 | 1873 | 718 | 1866 | 100 | 80 | 70 | | | | | | | |
| 850 | Vestas | 730 | Skeby/Tungelunda III,Väder | E8c | 52/74 | 031107 | 1800 | 1656 | 2022 | 728 | 1944 | 100 | | | | | | | | | |
| 850 | Vestas | 728 | Skeby/Tungelunda I,Väders | E8c | 52/74 | 031107 | 1800 | 1592 | 1861 | 776 | 1863 | 100 | 85 | 72 | | | | | | | |
| 850 | Vestas | 729 | Skeby/Tungelunda II,Väder | E8c | 52/74 | 031107 | 1800 | 1633 | 1943 | 789 | 1947 | 100 | 92 | 73 | | | | | | | |
| 850 | Vestas | 726 | Glänäs Vind,Väderstad | E8c | 52/65 | 031115 | 1700 | 1542 | 1910 | 709 | 1864 | 100 | | | | | | | | | |
| 850 | Vestas | 725 | Kärrets Gärd II,Långås | B5f | 52/74 | 031125 | 1760 | 1619 | 1851 | 843 | 1890 | 100 | 81 | 61 | | | | | | | |
| 850 | Vestas | 732 | Stavlösa Vind I,Stavlösa | E8f | 52/65 | 031205 | 1750 | 1411 | 1980 | 824 | 2039 | 100 | 95 | 67 | | | | | | | |
| 850 | Vestas | 734 | Stavlösa Vind III,Stavlösa | F8d | 52/65 | 031205 | 1750 | 1588 | 1980 | 819 | 2011 | 100 | 92 | 69 | | | | | | | |
| 850 | Vestas | 733 | Stavlösa Vind II,Stavlösa | E8f | 52/65 | 031205 | 1750 | 1609 | 2001 | 817 | 2028 | 100 | 97 | 70 | | | | | | | |
| 850 | Vestas | 739 | Mofalla Laggarebolet,Lagga | E8d | 52/65 | 031210 | | 1303 | 1508 | 653 | 1541 | 100 | 73 | 69 | | | | | | | |
| 850 | Vestas | 748 | Björnskallen, Kajsa,Ljungda | C18f | 52/65 | 031211 | 1900 | 1411 | 1423 | 427 | 1422 | 100 | 74 | 57 | | | | | | | |
| 850 | Vestas | 743 | Heås, Sibräcka,Sibräcka | B7g | 52/60 | 040121 | 1900 | 2073 | 2387 | 897 | 2480 | 100 | 112 | 80 | | | | | | | |
| 850 | Vestas | 751 | Stenkil,Stenskilsvärv, Varv | F8g | 52/65 | 040128 | 1700 | 1313 | 1707 | 664 | 1702 | 100 | 78 | 70 | | | | | | | |
| 850 | Vestas | 767 | Andersfält, 2 MITT,Tönners | C4e | 52/65 | 040131 | 1750 | 1461 | 1813 | 723 | 1752 | 100 | 69 | 58 | | | | | | | |
| 850 | Vestas | 768 | Andersfält, 3 NORR,Törne | C4e | 52/65 | 040131 | 1750 | 1480 | 1909 | 808 | 1858 | 100 | 76 | 58 | | | | | | | |
| 850 | Vestas | 766 | Andersfält, 1SYD,Tönnersa | C4e | 52/65 | 040131 | 1700 | 1332 | 1734 | 662 | 1633 | 100 | 50 | 52 | | | | | | | |
| 850 | Vestas | 764 | Ölanda,Istrum | D8h | 52/74 | 040225 | 1400 | 1148 | 1389 | 597 | 1431 | 99 | 72 | 68 | | | | | | | |
| 850 | Vestas | 760 | Tyskagården,Näs | D7h | 52/74 | 040318 | 1800 | 1504 | 1789 | 750 | 1833 | 100 | 87 | 69 | | | | | | | |
| 850 | Vestas | 762 | Kvismaren 1,Odensbacken | F10c | 52/74 | 040401 | 1430 | 1234 | 1461 | 613 | 1499 | 100 | 61 | 67 | | | | | | | |
| 850 | Vestas | 770 | Långeryd II,Långeryd | F-92d | 52/65 | 040506 | 1750 | 1634 | 1971 | 726 | 1951 | 100 | | | | | | | | | |
| 850 | Vestas | 769 | Långeryd I,Långeryd | F8d | 52/65 | 040506 | 1750 | 1651 | 2040 | 732 | 1986 | 100 | | | | | | | | | |
| 850 | Vestas | 773 | Brunnstorp Källby,Broby-Br | D8g | 52/74 | 040713 | 1500 | 1325 | 1678 | 711 | 1756 | 100 | 79 | 61 | | | | | | | |
| 850 | Vestas | 784 | St Wahlby,Väderstad | F8d | 52/74 | 041206 | 1850 | 1665 | 2077 | 757 | 2008 | 100 | | | | | | | | | |
| 850 | Vestas | 794 | Blås ut Vind AB,Lundsbrunn | D8g | 52/74 | 041213 | 1500 | 1331 | 1564 | 645 | 1629 | 100 | 82 | 69 | | | | | | | |
| 850 | Vestas | 785 | Tägneby Vind I,Tägneby | E8b | 52/65 | 041215 | 2000 | 1650 | 2327 | 872 | 2430 | 100 | | | | | | | | | |
| 850 | Vestas | 843 | Vannborga Nedra,Borgholm | H5a | 52/44 | 041231 | 1700 | 2008 | 2224 | 811 | 2113 | 100 | 86 | 56 | | | | | | | |
| 850 | Vestas | 842 | Vannborga Övra,Borgholm | H5a | 52/44 | 041231 | 1700 | 1805 | 1981 | 820 | 1930 | 100 | 110 | 75 | | | | | | | |
| 850 | Vestas | 788 | Isberget III,Skonberga | F8e | 52/74 | 050103 | 1600 | 1415 | 1586 | 330 | 1347 | 100 | | | | | | | | | |
| 850 | Vestas | 786 | Isberget I,Skonberga | F8e | 52/74 | 050103 | 1600 | 1454 | 1793 | 725 | 1803 | 100 | 73 | 68 | | | | | | | |
| 850 | Vestas | 787 | Isberget II,Skonberga | F8e | 52/74 | 050103 | 1600 | 1393 | 1719 | 712 | 1737 | 100 | 74 | 66 | | | | | | | |
| 850 | Vestas | 796 | Ova Vind,Lundsbrunn | D8g | 52/74 | 050116 | 1500 | 1367 | 1705 | 729 | 1777 | 100 | 86 | 69 | | | | | | | |
| 850 | Vestas | 795 | Kilabacken Vind AB,Lundsbr | D8g | 52/74 | 050118 | 1550 | 1544 | 1818 | 785 | 1913 | 100 | 96 | 71 | | | | | | | |
| 850 | Vestas | 797 | Ryda Vind AB,Ryda | C8b | 52/74 | 050127 | 1600 | 1543 | 1898 | | 1169 | 100 | | | | | | | | | |
| 850 | Vestas | 799 | Storön,Storön | M25c | 52/65 | 050201 | 1700 | 1585 | 1704 | 688 | 1931 | 100 | 117 | 72 | | | | | | | |
| 850 | Vestas | 800 | Hunflen, Ferdinand 20615, | E13a | 52/65 | 050403 | 1800 | 2064 | 2259 | 850 | 2354 | 98 | 115 | 75 | | | | | | | |
| 850 | Vestas | 801 | Hunflen, Vilhelm 20616,Äpp | E13a | 52/65 | 050504 | 1800 | 1655 | 1897 | 796 | 1999 | 97 | 109 | 76 | | | | | | | |
| 850 | Vestas | 802 | Viglunda,Skara | D8d | 52/72 | 050517 | 1600 | 1380 | 1720 | 593 | 1630 | 100 | 87 | 72 | | | | | | | |
| 850 | Vestas | 848 | Örum Ystad,Örum | D2c | 52/65 | 050520 | 2400 | 2003 | 2502 | 1089 | 2846 | 97 | 139 | 68 | | | | | | | |
| 850 | Vestas | 820 | Lönhult,Lönhults gård | C3d | 52/74 | 051017 | 1875 | 1951 | 2299 | 850 | 2144 | 100 | 96 | 65 | | | | | | | |
| 850 | Vestas | 804 | Östest-kröket,Tännäs | C17f | 52/55 | 051124 | 1900 | 2676 | 2710 | 947 | 2676 | 100 | 143 | 77 | | | | | | | |
| 850 | Vestas | 840 | Uljeberg,Uljebergs Säteri | F8e | 52/74 | 051221 | 1400 | 1306 | 1529 | 646 | 1522 | 100 | 69 | 68 | | | | | | | |
| 850 | Vestas | 844 | Ekekullen,Dintestorp | D7h | 52/74 | 051228 | 1650 | 1462 | 1574 | 593 | 1483 | 100 | 78 | 70 | | | | | | | |
| 850 | Vestas | 853 | Lyckevind Istrum,Istrum | D8e | 52/74 | 061130 | 1400 | 200 | 1414 | 606 | 1455 | 99 | 74 | 66 | | | | | | | |
| 850 | Vestas | 977 | Uvbergets Hanna,Smedjeb | F12e | 52/74 | 070105 | 1800 | | 1277 | 631 | 1908 | 100 | 156 | 81 | | | | | | | |
| 850 | Vestas | 855 | Brönnestad 3,Brönnestad B | C1i | 52/52 | 070206 | 2050 | | 1717 | 935 | 2245 | 100 | 124 | 72 | | | | | | | |
| 850 | 200 | Vestas | 693 | Nils, Almåsa,Almåsaaberget | E19g | 52/55 | 021008 | 2162 | 1761 | 1797 | 403 | 1545 | 100 | 75 | 42 | | | | | | |
| 850 | 200 | Vestas | 718 | Tomten flo,Gråstorp | C8d | 52/74 | 030630 | 1786 | 1441 | 1817 | 769 | 1878 | 98 | 89 | 72 | | | | | | |
| 850 | 200 | Vestas | 740 | Östergården, Skara,Skånin | D8d | 52/74 | 031215 | 1650 | 1363 | 1721 | 728 | 1779 | 100 | 87 | 72 | | | | | | |
| 850 | 200 | Vestas | 789 | Kroka 1,Söderåkra | G4b | 52/74 | 041128 | 1890 | 1124 | 1404 | 698 | 1598 | 100 | 97 | 76 | | | | | | |
| 900 | Neg Micon | 851 | OBV2, Hjällö,Hjo | E8a | 52/60 | 050726 | 1700 | 1401 | 1575 | 670 | 1567 | 100 | 79 | 64 | | | | | | | |
| 900 | 200 | NEG Micon | 482 | Äppelbovind ek.för,Hunnfle | E13a | 52/49 | 001217 | 1600 | 1955 | 2107 | 803 | 2268 | 99 | 108 | 83 | | | | | | |
| 900 | 200 | NEG Micon | 618 | Greby,Greby Samfällighet | G4i | 52/55 | 001229 | 1652 | 1343 | 1197 | 761 | 1704 | 100 | 100 | 81 | | | | | | |
| 900 | 200 | NEG Micon | 484 | Klimpfjäll 2,Klimpfjäll | F23d | 52/49 | 010116 | | 766 | 1254 | 437 | 1194 | 99 | 72 | 65 | | | | | | |
| 900 | 200 | NEG Micon | 483 | Klimpfjäll 1,Klimpfjäll | F23d | 52/49 | 010116 | | 749 | 76 | 375 | 451 | 41 | 74 | 66 | | | | | | |
| 900 | 200 | NEG Micon | 485 | Klimpfjäll 3,Klimpfjäll | F23d | 52/49 | 010116 | | 759 | 1446 | 417 | 1264 | 94 | 85 | 69 | | | | | | |
| 900 | 200 | NEG Micon | 493 | Dörestorp 2,Laholm | C4b | 52/55 | 010614 | 1650 | 1329 | 1702 | 504 | 1362 | 100 | 67 | 55 | | | | | | |
| 900 | 200 | NEG Micon | 496 | Viscaria 5,Viscaria | J29h | 52/49 | 010901 | 1655 | 1060 | 1305 | 381 | 1171 | 100 | 80 | 73 | | | | | | |
| 900 | 200 | NEG Micon | 499 | Viscaria 6,Viscaria | J29h | 52/49 | 010901 | 1709 | 1330 | 1480 | 446 | 1362 | 100 | 93 | 80 | | | | | | |
| 900 | 200 | NEG Micon | 495 | Viscaria 2,Viscaria | J29h | 52/49 | 010901 | 1784 | 1312 | 1390 | 480 | 1312 | 100 | 83 | 78 | | | | | | |
| 900 | 200 | NEG Micon | 496 | Viscaria 3,Viscaria | J29h | 52/49 | 010901 | 1896 | 1346 | 1484 | 512 | 1400 | 100 | 91 | 80 | | | | | | |
| 900 | 200 | NEG Micon | 497 | Viscaria 4,Viscaria | J29h | 52/49 | 010901 | 1837 | 1308 | 1470 | 450 | 1352 | 100 | 91 | 80 | | | | | | |
| 900 | 200 | NEG Micon | 494 | Viscaria 1,Viscaria | J29h | 52/49 | 010918 | 1846 | 1195 | 1341 | 465 | 1244 | 100 | 84 | 77 | | | | | | |
| 900 | 200 | NEG Micon | 694 | Össjö boställe,Össjö | C3h | 52/72 | 020101 | | 1566 | 1913 | 141 | 1159 | 100 | 7 | 56 | | | | | | |
| 900 | 200 | NEG Micon | 737 | Badane 3,Kättilstorp | D7h | 52/72 | 030910 | | 1280 | 1574 | 677 | 1608 | 100 | 69 | 73 | | | | | | |
| 900 | 200 | NEG Micon | 736 | Badane 2,Kättilstorp | D7h | 52/72 | 030911 | | 1275 | 1562 | 672 | 1592 | 100 | 70 | 75 | | | | | | |
| 900 | 200 | NEG Micon | 758 | Kuling IV,Falkenberg | B5f | 52/60 | | | | | | | | | | | | | | | |

| Ny * | Effekt (kW) | | Fabrikat | Nr | Anläggning Benämning, Ort | Placering Karta | D/H (m) | I drift | Ber MWh | 2006 MWh | 2007 MWh | 2008 MWh | 12mån MWh | 12mån % | Månad MWh | Tid % | Hindertid (tim) | | | | |
|------|---------------|-----|----------|-----------------------------|------------------------------|--------------------|------------|---------|------------|-------------|-------------|-------------|--------------|------------|--------------|----------|-----------------|-----|-----|----|-----|
| | Hög | Låg | | | | | | | | | | | | | | | MS | YNS | OYS | PU | OPS |
| 1425 | GE Wind | En | 605 | Utgrunden T1,Offshore | G3h | 70,5/65 | 001221 | | 4061 | 5598 | 1896 | 5281 | 92 | 379 | 84 | | 1 | | | | |
| 1425 | GE Wind | En | 610 | Utgrunden T6,Offshore | G3h | 70,5/65 | 001221 | | 2753 | 4418 | 2030 | 4955 | 83 | 329 | 79 | 11 | 19 | | | | 7 |
| 1500 | Enercon | | 381 | Trolleberg,Trollebergs Gärd | C2e | 66/67 | 990515 | 3700 | 3023 | 3923 | 1516 | 3701 | 100 | 119 | 76 | | | | | | |
| 1500 | GE Wind | En | 644 | Assmäsa 3,Assmäsa | D2b | 70,5/65 | 020712 | 3475 | 2201 | 2682 | 920 | 2420 | 97 | 149 | 65 | | | | | | |
| 1500 | GE Wind | En | 642 | Assmäsa 1,Assmäsa | D2b | 70,5/65 | 020712 | 3475 | 2350 | 2964 | 1016 | 2577 | 97 | 148 | 69 | | | | | | |
| 1500 | GE Wind | En | 643 | Assmäsa 2,Assmäsa | D2b | 70,5/65 | 020712 | 3475 | 2278 | 3001 | 467 | 2022 | 95 | 155 | 64 | | | | | | |
| 1500 | Enercon | | 645 | Hedagården 1,Hedagården | C3b | 66/65 | 020901 | 3700 | 3414 | 4074 | 1806 | 4002 | 100 | 191 | 85 | | | | | | |
| 1500 | Enercon | | 646 | Hedagården 4,Hedagården | C3b | 66/65 | 020901 | 3700 | 3408 | 3979 | 1772 | 3918 | 100 | 198 | 84 | | | | | | |
| 1500 | Enercon | | 647 | Hedagården 5,Hedagården | C3b | 66/65 | 020901 | 3700 | 3159 | 3528 | 1526 | 3461 | 100 | 193 | 84 | | | | | | |
| 1500 | Enercon | | 675 | Hedagården 2,Hedagården | C3b | 70/65 | 030101 | 3700 | 3281 | 3690 | 1706 | 3690 | 100 | 169 | 82 | | | | | | |
| 1500 | Enercon | | 676 | Hedagården 3,Hedagården | C3b | 70/65 | 030101 | 3700 | 3226 | 3897 | 1762 | 3818 | 100 | 186 | 85 | | | | | | |
| 1500 | Enercon | | 677 | Hedagården 6,Hedagården | C3b | 70/65 | 030101 | 3700 | 3247 | 3944 | 1734 | 3845 | 100 | 198 | 86 | | | | | | |
| 1500 | Enercon | | 715 | Annevind 2,Annelöv | C2h | 70/65 | 030615 | 3700 | 3269 | 3907 | 1720 | 3876 | 100 | 199 | 85 | | | | | | |
| 1500 | Enercon | | 714 | Annevind 1,Annelöv | C2h | 70/65 | 030615 | 3700 | 3276 | 3883 | 1768 | 3883 | 100 | 199 | 86 | | | | | | |
| 1500 | Enercon | | 888 | Nygårdshus 2,Eslov | - | 66/65 | 041001 | 4200 | 634 | 3807 | 1702 | 4261 | 100 | 195 | 82 | | | | | | |
| 1500 | Enercon | | 889 | p.Olofsson Energi,Eslov | D2g | 70/86 | 041101 | 4100 | | 3484 | 1665 | 4001 | 100 | 195 | 82 | | | | | | |
| 1500 | Vestas | | 783 | Offerdal Råshön 7,Ånge | 1287h | 82/78 | 041203 | 3955 | 4077 | 4262 | 1188 | 3921 | 100 | 61 | 21 | | | | | | |
| 1500 | Vestas | | 781 | Offerdal Råshön 5,Ånge | E19g | 82/78 | 041203 | 4032 | 3683 | 4061 | 1123 | 3712 | 100 | 20 | 10 | | | | | | |
| 1500 | Vestas | | 782 | Offerdal Råshön 6,Ånge | E19g | 82/78 | 041205 | 4054 | 4130 | 1643 | 819 | 922 | 100 | 247 | 70 | | | | | | |
| 1500 | Vestas | | 778 | Offerdal Råshön 2,Ånge | E19g | 82/78 | 041205 | 4319 | 4528 | 4478 | 1401 | 4260 | 100 | 32 | 11 | | | | | | |
| 1500 | Vestas | | 777 | Offerdal Råshön 1,Ånge | E19g | 82/78 | 041207 | 4031 | 2698 | 4011 | 1496 | 3953 | 100 | 233 | 64 | | | | | | |
| 1500 | Vestas | | 779 | Offerdal Råshön 3,Ånge | E19g | 82/78 | 041208 | 3613 | 4219 | 4084 | 1250 | 3722 | 100 | 41 | 14 | | | | | | |
| 1500 | Vestas | | 780 | Offerdal Råshön 4,Ånge | E19g | 82/78 | 041208 | 4023 | 4186 | 3931 | 1279 | 3699 | 100 | 39 | 12 | | | | | | |
| 1500 | Vestas | | 814 | Aapua 6,Aapua | M27i | 82/78 | 050928 | 4500 | 4610 | 4599 | 1542 | 4717 | 98 | 430 | 85 | | | | 7 | | |
| 1500 | Vestas | | 813 | Aapua 5,Aapua | M27i | 82/78 | 050928 | 4397 | 4671 | 4500 | 1609 | 4316 | 86 | 417 | 84 | | | | 7 | | |
| 1500 | Vestas | | 812 | Aapua 4,Aapua | M27i | 82/78 | 050928 | 4344 | 4542 | 4750 | 1525 | 4499 | 94 | 433 | 83 | | | | 7 | | |
| 1500 | Vestas | | 815 | Aapua 7,Aapua | M27i | 82/78 | 050928 | 4613 | 4831 | 5138 | 1483 | 4755 | 97 | 402 | 82 | | | 3 | | 7 | |
| 1500 | Vestas | | 811 | Aapua 3,Aapua | M27i | 82/78 | 050928 | 4140 | 4179 | 4356 | 1344 | 4079 | 93 | 297 | 65 | 175 | | | | | 9 |
| 1500 | Vestas | | 810 | Aapua 2,Aapua | M27i | 82/78 | 050929 | 4232 | 4152 | 4592 | 1400 | 4269 | 91 | 316 | 63 | 171 | | | 6 | | |
| 1500 | Vestas | | 809 | Aapua 1,Aapua | M27i | 82/78 | 051003 | 4465 | 4689 | 5103 | 1569 | 4818 | 96 | 397 | 82 | 19 | | | 9 | | |
| 1500 | 300 Vestas | | 386 | Slitevind XXIV,Smöjen | J7c | 66/67 | 990824 | 4119 | 2466 | 3349 | 1549 | 3569 | 95 | 193 | 76 | 7 | 8 | | | | |
| 1500 | 300 Vestas | | 387 | Slitevind XXV,Smöjen | J7c | 66/67 | 990824 | 3970 | 3075 | 3329 | 1493 | 3554 | 99 | 189 | 55 | | | | | | |
| 1500 | 300 Vestas | | 389 | Slitevind XXVII,Smöjen | J7c | 66/67 | 990826 | 4298 | 3611 | 3860 | 1737 | 4086 | 98 | 233 | 59 | | | | 2 | | |
| 1500 | 300 Vestas | | 388 | Slitevind XXVI,Smöjen | J7c | 66/67 | 990828 | 4266 | 3169 | 3723 | 1061 | 3359 | 83 | 51 | 10 | | | | | | 510 |
| 1500 | 300 Vestas | | 422 | Svireg, Skåls 12,Näs | I5f | 66/67 | 000121 | 4550 | 3692 | 3859 | 1937 | 4043 | 84 | 198 | 72 | 13 | | | | 4 | |
| 1500 | 300 Vestas | | 476 | Storugns 9,Lärbro | J7e | 66/78 | 010310 | 3497 | 2957 | 3080 | 1494 | 3382 | 93 | 188 | 81 | | | | | | |
| 1500 | 300 Vestas | | 475 | Storugns 8,Lärbro | J7e | 66/78 | 010313 | 3430 | 2924 | 3378 | 1608 | 3553 | 98 | 196 | 83 | | | 2 | | | |
| 1500 | 300 Vestas | | 474 | Storugns 7,Lärbro | J7e | 66/78 | 010317 | 3377 | 2785 | 3066 | 1516 | 3224 | 95 | 191 | 79 | | | 1 | | | |
| 1500 | 300 Vestas | | 617 | Sigwards 3,Näs | I5f | 66/80 | 011108 | 4500 | 4115 | 4964 | 2144 | 5158 | 97 | 237 | 78 | | | | 3 | | 16 |
| 1500 | 400 NEG Micon | | 699 | Digerberget,Digerberget | D17c | 72/62 | 020101 | 3800 | 2557 | 2486 | 971 | 2356 | 89 | 122 | 63 | | | | | | |
| 1500 | 400 NEG Micon | | 830 | Mungseröd 1,Mungseröd | A9f | 72/67 | 060131 | 2800 | 2387 | 3096 | 1276 | 3231 | 100 | 182 | 87 | | | | | | |
| 1500 | 400 NEG Micon | | 832 | Mungseröd 3,Mungseröd | A9f | 72/67 | 060131 | 2800 | 2218 | 2986 | 1272 | 3139 | 100 | 181 | 86 | | | | | | |
| 1500 | 400 NEG Micon | | 833 | Mungseröd 4,Mungseröd | A9f | 72/67 | 060131 | 2800 | 2027 | 2567 | 1132 | 2748 | 100 | 154 | 88 | | | | | | |
| 1500 | 400 NEG Micon | | 834 | Mungseröd 5,Mungseröd | A9f | 72/67 | 060131 | 2800 | 2471 | 3129 | 1320 | 3264 | 100 | 192 | 90 | | | | | | |
| 1500 | 400 NEG Micon | | 835 | Mungseröd 6,Mungseröd | A9f | 72/67 | 060131 | 2800 | 2423 | 2981 | 1263 | 3065 | 100 | 179 | 88 | | | | | | |
| 1500 | 400 NEG Micon | | 831 | Mungseröd 2,Mungseröd | A9f | 72/67 | 060131 | 2800 | 2239 | 2892 | 1208 | 3086 | 100 | 163 | 86 | | | | | | |
| 1750 | Vestas | | 637 | Gråsjön,Kallsedet | D20d | 66/60 | 001108 | 3000 | 1540 | | | | | | | | | | | | |
| 1800 | Vestas | | 859 | Stenbrona 2,Stenbrona-Sal | C8f | 90/95 | 070204 | 5200 | | 5402 | 2445 | 6399 | 100 | 342 | 76 | | | | | | |
| 1800 | Vestas | | 858 | Stenbrona 1,Stenbrona-Sal | C8f | 90/95 | 070204 | 5200 | | 5297 | 2455 | 6345 | 100 | 333 | 75 | | | | | | |
| 1800 | Vestas | | 956 | Vara Tornum,Kvänum | C8f | 90/95 | 080101 | 5300 | | | | | | | | | | | | | |
| 2000 | Vestas | | 738 | Skåls Näs, Slitevind XXIX,S | I5f | 80/78 | 031214 | 6000 | 5413 | 6151 | 2328 | 6210 | 96 | 322 | 78 | | | 3 | | | 4 |
| 2000 | Vestas | | 793 | Västraby 4 NO,Västraby | D2g | 80/78 | 040806 | 4800 | 3959 | 4850 | 2111 | 4632 | 100 | 248 | 66 | | | | | | |
| 2000 | Vestas | | 792 | Västraby 3 SO,Västraby | D2g | 80/78 | 040806 | 4800 | 4256 | 4503 | 2243 | 4632 | 100 | 261 | 67 | | | | | | |
| 2000 | Vestas | | 791 | Västraby 2 NV,Västraby | D2g | 80/78 | 040806 | 4800 | 4169 | 4247 | 2215 | 4927 | 100 | 246 | 67 | | | | | | |
| 2000 | Vestas | | 790 | Västraby 1 SV,Löberöd | D2g | 80/78 | 040806 | 4800 | 4451 | 4943 | 2340 | 4807 | 100 | 265 | 67 | | | | | | |
| 2000 | Enercon | | 774 | Orup 1,Rolsberga | D2g | 70/65 | 041201 | 3500 | 3087 | 3836 | 1809 | 3722 | 100 | 160 | 78 | | | | | | |
| 2000 | Enercon | | 821 | Långå 1,Långå | D17e | 70/85 | 051007 | 5400 | 3702 | 4208 | 1530 | 4211 | 100 | 195 | 84 | | | | | | |
| 2000 | Enercon | | 822 | Långå 2,Långå | D17e | 70/85 | 051017 | 5400 | 4052 | 3972 | 1516 | 4266 | 100 | 194 | 84 | | | | | | |
| 2000 | Enercon | | 823 | Långå 3,Långå | D17e | 70/85 | 051024 | 5400 | 3926 | 4357 | 1519 | 4285 | 100 | 199 | 86 | | | | | | |
| 2000 | Enercon | | 824 | Långå 4,Långå | D17e | 70/85 | 051031 | 5400 | 4105 | 4414 | 1621 | 4430 | 100 | 203 | 83 | | | | | | |
| 2000 | Enercon | | 825 | Långå 5,Långå | D17e | 70/85 | 051108 | 5400 | 3436 | 3874 | 1449 | 4223 | 100 | 126 | 66 | | | | | | |
| 2000 | Enercon | | 845 | Odarslöv 1,Eslov | C2f | 70/64 | 060720 | 4900 | 1819 | 4840 | 2292 | 4940 | 100 | 226 | 80 | | | | | | |
| 2000 | Enercon | | 847 | Odarslöv 3,Eslov | C2i | 70/64 | 060720 | 4900 | 1658 | 4467 | 2076 | 4468 | 100 | 189 | 72 | | | | | | |
| 2000 | Enercon | | 846 | Odarslöv 2,Eslov | C2i | 70/64 | 060720 | 4900 | 1833 | 4482 | 2228 | 4679 | 100 | 218 | 81 | | | | | | |
| 2000 | Vestas | | 971 | Munkagård 3,Tvååker | B5f | 90/80 | 061220 | 5300 | | 5429 | 2213 | 6559 | 100 | 274 | 78 | | | | | | |
| 2000 | Vestas | | 970 | Munkagård 2,Tvååker | B5f | 90/80 | 061220 | 5300 | | 5133 | 2112 | 6222 | 100 | 261 | 68 | | | | | | |
| 2000 | Vestas | | 969 | Munkagård 1,Tvååker | B5f | 90/80 | 061220 | 5300 | | 5773 | 2214 | 6836 | 100 | 239 | 64 | | | | | | |
| 2000 | Vestas | | 880 | Hornberget 3,Aspliden | I23e | 90/80 | 070111 | 6000 | | 2619 | 1473 | 4092 | 100 | 422 | 79 | | | | | | |
| 2000 | Vestas | | 881 | Hornberget 4,Aspliden | I23e | 90/80 | 070111 | 6000 | | 2782 | 1480 | 4262 | 100 | 218 | 33 | | | | | | |
| 2000 | Vestas | | 882 | Hornberget 5,Aspliden | I23e | 90/80 | 070111 | 6000 | | 2438 | 1570 | 4008 | 100 | 400 | 83 | | | | | | |
| 2000 | Vestas | | 878 | Hornberget 1,Aspliden | I23e | 90/80 | 070111 | 6000 | | 2309 | 1601 | 3909 | 100 | 290 | 63 | | | | | | |
| 2000 | Vestas | | 879 | Hornberget 2,Aspliden | I23e | 90/80 | 070111 | 6000 | | 2162 | 1404 | 3566 | 100 | 288 | 72 | | | | | | |
| 2000 | | | | | | | | | | | | | | | | | | | | | |

| Ny * | Effekt (kW) | | Fabrikat | Nr Anläggning | Placering | D/H | I drift | Ber | 2006 | 2007 | 2008 | 12mån | 12mån | Månad | Tid | Hindertid (tim) | | | | PU | OPS | TF |
|------|-------------|-----------|----------|----------------------------|-----------|---------|---------|------|------|------|------|-------|-------|-------|-----|-----------------|-------|-----|-----|----|-----|----|
| | Hög | Låg | | | | | | | | | | | | | | Benämning, Ort | Karta | (m) | MWh | | | |
| 2000 | 500 | NEG Micon | 690 | Yttre Stengrund 5,Offshore | G3d | 72/60 | 010930 | 6000 | 3132 | 0 | | 0 | 44 | | | | | | | | | |
| 2000 | 500 | NEG Micon | 688 | Yttre Stengrund 3,Offshore | G3d | 72/60 | 010930 | 6000 | 4495 | 5915 | | 3666 | 96 | | | | | | | | | |
| 2000 | 500 | NEG Micon | 686 | Yttre Stengrund 1,Offshore | G3d | 72/60 | 010930 | 6000 | 2792 | 5381 | | 3757 | 97 | | | | | | | | | |
| 2000 | 1000 | Vestas | 477 | Boel,Malmö | C2e | 80/80 | 010221 | 6300 | 3740 | 4832 | 2695 | 6125 | 98 | 278 | 78 | | | | | | | |
| 2000 | 1000 | Vestas | 683 | Lundåkra, LU1,Landskrona | C2g | 80/78 | 030120 | 5500 | 4766 | 5444 | 2310 | 5338 | 93 | 270 | 73 | | | | | | | |
| 2000 | 1000 | Vestas | 684 | Lundåkra, LU2,Landskrona | C2g | 80/78 | 030120 | 5500 | 5106 | 5263 | 2444 | 5208 | 89 | 231 | | 72 | | | | | | |
| 2000 | 1000 | Vestas | 973 | Byråsen, Marika,Malung | D13e | 80/78 | 071222 | 4000 | | 911 | 1570 | 2481 | 100 | 196 | 67 | | | | | | | |
| 2000 | 1000 | Vestas | 974 | Byråsen, Virola,Malung | D13e | 80/78 | 071229 | 4000 | | 1089 | 1721 | 2809 | 100 | 185 | 67 | | | | | | | |
| 2300 | | Siemens | 922 | Lillgrund E-03,Offshore | C2a | 92,4/69 | 071004 | 6875 | | 1916 | 2747 | 4663 | 100 | 260 | | | | | | | | |
| 2300 | | Siemens | 920 | Lillgrund E-01,Offshore | C2a | 92,4/69 | 071004 | 6875 | | 1888 | 2617 | 4506 | 100 | 321 | | | | | | | | |
| 2300 | | Siemens | 926 | Lillgrund F-02,Offshore | C2a | 92,4/69 | 071004 | 6875 | | 1837 | 2904 | 4741 | 100 | 291 | | | | | | | | |
| 2300 | | Siemens | 921 | Lillgrund E-02,Offshore | C2a | 92,4/69 | 071004 | 6875 | | 1634 | 2918 | 4552 | 100 | 280 | | | | | | | | |
| 2300 | | Siemens | 935 | Lillgrund H-02,Offshore | C2a | 92,4/69 | 071005 | 6875 | | 2026 | 3362 | 5388 | 100 | 333 | | | | | | | | |
| 2300 | | Siemens | 937 | Lillgrund A-01,Offshore | C2a | 92,4/69 | 071006 | 6875 | | 1140 | 3253 | 4393 | 100 | 255 | | | | | | | | |
| 2300 | | Siemens | 927 | Lillgrund F-03,Offshore | C2a | 92,4/69 | 071006 | 6875 | | 1291 | 2398 | 3689 | 100 | 257 | | | | | | | | |
| 2300 | | Siemens | 932 | Lillgrund G-03,Offshore | C2a | 92,4/69 | 071007 | 6875 | | 1881 | 2982 | 4864 | 100 | 271 | | | | | | | | |
| 2300 | | Siemens | 931 | Lillgrund G-02,Offshore | C2a | 92,4/69 | 071008 | 6875 | | 1707 | 3095 | 4802 | 100 | 309 | | | | | | | | |
| 2300 | | Siemens | 936 | Lillgrund H-03,Offshore | C2a | 92,4/69 | 071008 | 6875 | | 1511 | 2981 | 4492 | 100 | 301 | | | | | | | | |
| 2300 | | Siemens | 904 | Lillgrund B-08,Offshore | C2a | 92,4/69 | 071020 | 6875 | | 1735 | 3503 | 5238 | 100 | 375 | | | | | | | | |
| 2300 | | Siemens | 890 | Lillgrund A-01,Offshore | C2a | 92,4/69 | 071020 | 6875 | | 1599 | 3116 | 4715 | 100 | 355 | | | | | | | | |
| 2300 | | Siemens | 891 | Lillgrund A-02,Offshore | C2a | 92,4/69 | 071020 | 6875 | | 1331 | 2787 | 4119 | 100 | 295 | | | | | | | | |
| 2300 | | Siemens | 892 | Lillgrund A-03,Offshore | C2a | 92,4/69 | 071021 | 6875 | | 935 | 2136 | 3071 | 100 | 338 | | | | | | | | |
| 2300 | | Siemens | 896 | Lillgrund A-07,Offshore | C2a | 92,4/69 | 071022 | 6875 | | 1750 | 3400 | 5149 | 100 | 381 | | | | | | | | |
| 2300 | | Siemens | 895 | Lillgrund A-06,Offshore | C2a | 92,4/69 | 071022 | 6875 | | 1690 | 3221 | 4911 | 100 | 361 | | | | | | | | |
| 2300 | | Siemens | 893 | Lillgrund A-04,Offshore | C2a | 92,4/69 | 071022 | 6875 | | 1631 | 3131 | 4762 | 100 | 336 | | | | | | | | |
| 2300 | | Siemens | 903 | Lillgrund G-02,Offshore | C2a | 92,4/69 | 071023 | 6875 | | 1633 | 3202 | 4835 | 100 | 325 | | | | | | | | |
| 2300 | | Siemens | 894 | Lillgrund A-05,Offshore | C2a | 92,4/69 | 071024 | 6875 | | 1270 | 2438 | 3707 | 100 | 347 | | | | | | | | |
| 2300 | | Siemens | 899 | Lillgrund B-03,Offshore | C2a | 92,4/69 | 071104 | 6875 | | 1324 | 2910 | 4234 | 100 | 309 | | | | | | | | |
| 2300 | | Siemens | 900 | Lillgrund B-04,Offshore | C2a | 92,4/69 | 071104 | 6875 | | 1358 | 2979 | 4337 | 100 | 296 | | | | | | | | |
| 2300 | | Siemens | 898 | Lillgrund B-02,Offshore | C2a | 92,4/69 | 071104 | 6875 | | 1369 | 2905 | 4274 | 100 | 317 | | | | | | | | |
| 2300 | | Siemens | 897 | Lillgrund B-01,Offshore | C2a | 92,4/69 | 071104 | 6875 | | 1350 | 2572 | 3922 | 100 | | | | | | | | | |
| 2300 | | Siemens | 911 | Lillgrund G-02,Offshore | C2a | 92,4/69 | 071108 | 6875 | | 1235 | 3210 | 4444 | 100 | 301 | | | | | | | | |
| 2300 | | Siemens | 910 | Lillgrund C-06,Offshore | C2a | 92,4/69 | 071108 | 6875 | | 1250 | 3078 | 4328 | 100 | 283 | | | | | | | | |
| 2300 | | Siemens | 902 | Lillgrund B-06,Offshore | C2a | 92,4/69 | 071108 | 6875 | | 916 | 2900 | 3816 | 100 | 312 | | | | | | | | |
| 2300 | | Siemens | 901 | Lillgrund B-05,Offshore | C2a | 92,4/69 | 071108 | 6875 | | 1122 | 3041 | 4162 | 100 | 296 | | | | | | | | |
| 2300 | | Siemens | 919 | Lillgrund D-08,Offshore | C2a | 92,4/69 | 071112 | 6875 | | 1323 | 3217 | 4540 | 100 | 303 | | | | | | | | |
| 2300 | | Siemens | 912 | Lillgrund C-08,Offshore | C2a | 92,4/69 | 071115 | 6875 | | 1133 | 3231 | 4363 | 100 | 321 | | | | | | | | |
| 2300 | | Siemens | 905 | Lillgrund C-01,Offshore | C2a | 92,4/69 | 071117 | 6875 | | 946 | 2943 | 3888 | 100 | 331 | | | | | | | | |
| 2300 | | Siemens | 917 | Lillgrund D-06,Offshore | C2a | 92,4/69 | 071120 | 6875 | | 541 | 2930 | 3470 | 100 | 282 | | | | | | | | |
| 2300 | | Siemens | 906 | Lillgrund C-02,Offshore | C2a | 92,4/69 | 071120 | 6875 | | 923 | 2850 | 3772 | 100 | 290 | | | | | | | | |
| 2300 | | Siemens | 907 | Lillgrund C-03,Offshore | C2a | 92,4/69 | 071120 | 6875 | | 918 | 2814 | 3732 | 100 | 282 | | | | | | | | |
| 2300 | | Siemens | 918 | Lillgrund D-07,Offshore | C2a | 92,4/69 | 071124 | 6875 | | 856 | 3254 | 4110 | 100 | 293 | | | | | | | | |
| 2300 | | Siemens | 908 | Lillgrund C-04,Offshore | C2a | 92,4/69 | 071124 | 6875 | | 878 | 2810 | 3688 | 100 | 278 | | | | | | | | |
| 2300 | | Siemens | 909 | Lillgrund C-05,Offshore | C2a | 92,4/69 | 071124 | 6875 | | 563 | 2940 | 3503 | 100 | 283 | | | | | | | | |
| 2300 | | Siemens | 925 | Lillgrund E-07,Offshore | C2a | 92,4/69 | 071128 | 6875 | | 888 | 3351 | 4240 | 100 | 308 | | | | | | | | |
| 2300 | | Siemens | 913 | Lillgrund D-01,Offshore | C2a | 92,4/69 | 071201 | 6875 | | 462 | 2667 | 3129 | 100 | 310 | | | | | | | | |
| 2300 | | Siemens | 914 | Lillgrund D-02,Offshore | C2a | 92,4/69 | 071201 | 6875 | | 499 | 2865 | 3364 | 100 | 280 | | | | | | | | |
| 2300 | | Siemens | 915 | Lillgrund D-03,Offshore | C2a | 92,4/69 | 071201 | 6875 | | 181 | 2853 | 3034 | 100 | 266 | | | | | | | | |
| 2300 | | Siemens | 923 | Lillgrund E-04,Offshore | C2a | 92,4/69 | 071201 | 6875 | | 320 | 2986 | 3306 | 100 | 261 | | | | | | | | |
| 2300 | | Siemens | 934 | Lillgrund G-05,Offshore | C2a | 92,4/69 | 071201 | 6875 | | 147 | 3177 | 3324 | 100 | 293 | | | | | | | | |
| 2300 | | Siemens | 924 | Lillgrund E-06,Offshore | C2a | 92,4/69 | 071201 | 6875 | | 582 | 3192 | 3774 | 100 | 282 | | | | | | | | |
| 2300 | | Siemens | 928 | Lillgrund F-04,Offshore | C2a | 92,4/69 | 071201 | 6875 | | 268 | 2982 | 3249 | 100 | 261 | | | | | | | | |
| 2300 | | Siemens | 929 | Lillgrund F-05,Offshore | C2a | 92,4/69 | 071201 | 6875 | | 186 | 3066 | 3251 | 100 | 294 | | | | | | | | |
| 2300 | | Siemens | 930 | Lillgrund F-06,Offshore | C2a | 92,4/69 | 071201 | 6875 | | 244 | 3336 | 3580 | 100 | 303 | | | | | | | | |
| 2300 | | Siemens | 933 | Lillgrund G-04,Offshore | C2a | 92,4/69 | 071201 | 6875 | | 288 | 3179 | 3467 | 100 | 262 | | | | | | | | |
| 2300 | | Siemens | 916 | Lillgrund D-04,Offshore | C2a | 92,4/69 | 071201 | 6875 | | 118 | 2549 | 2666 | 100 | 250 | | | | | | | | |
| 3000 | | Vestas | 763 | Olsvenne 2,Näs | I5f | 90/80 | 021201 | 8000 | 7344 | 7089 | 1806 | 5728 | 67 | 478 | 74 | 6 | 3 | | 10 | | 4 | |
| 3000 | | Vestas | 867 | Holmsund 2,Holmsund | K20e | 90/80 | 070503 | 6000 | | 4077 | 2891 | 6967 | 100 | 511 | 73 | | | | | | | |

Karta över verkens placering

